

KPF 2023 OBE Update #4, 28th of July, 2023

Water Flow Rates

- Murray River flows into KPF have continued over the last week seeing a small increase to flow rates.
- A graph has been supplied that indicates the flows (ML/d) at both the Torrumbarry Weir and Barham township since the 1st of June, the commence to flow thresholds are also depicted on this first graph.
- The second graph supplied depicts the flows in the Murray River, Goulburn River and Campaspe River at key locations since the 1st of June.
- We have another brilliant satellite image from Tuesday the 25th of July- I have included a copy of this image below, however; here is the link to the free website if you would like to have a look yourself.

Sentinel Hub EO Browser (sentinel-hub.com)

- A third graph has been supplied to depict the dissolved oxygen levels (mg/L) in the exit flows from the forest.

Ecological Observations

- The ecological response in the upstream portion of the forest is really starting to kick off now that it has been receiving inflows since the middle of June.
- The water is moving swiftly through the forest and the Dissolved Oxygen levels are remaining high, it is great to see some fresh water moving through the system.
- The flood water is also incredibly clear, the bottom can be seen in shallower water to the point where small living critters and frogspawn can be seen with the naked eye.
- Aquatic vegetation has emerged in the form of nardoo, juncus, matted starwort, water ribbon and many more, which is great to see given that it is the middle of Winter.
- Frog calling is ever increasing.
- Colonial waterbird activity throughout the forest is increasing.

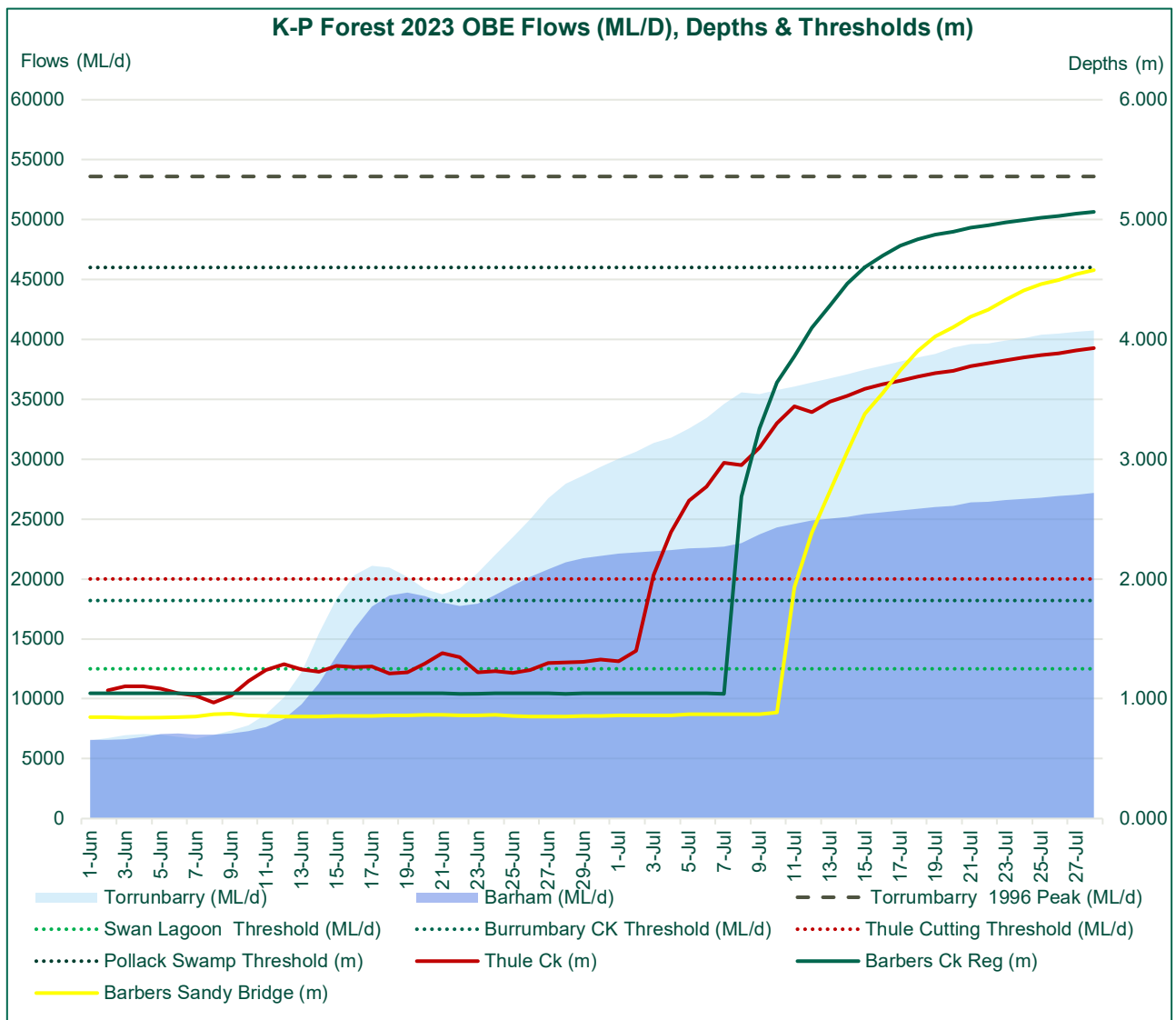


Figure 1: Hydrograph showing Murray River flows (ML/d) and KPF inflow thresholds (ML/d)

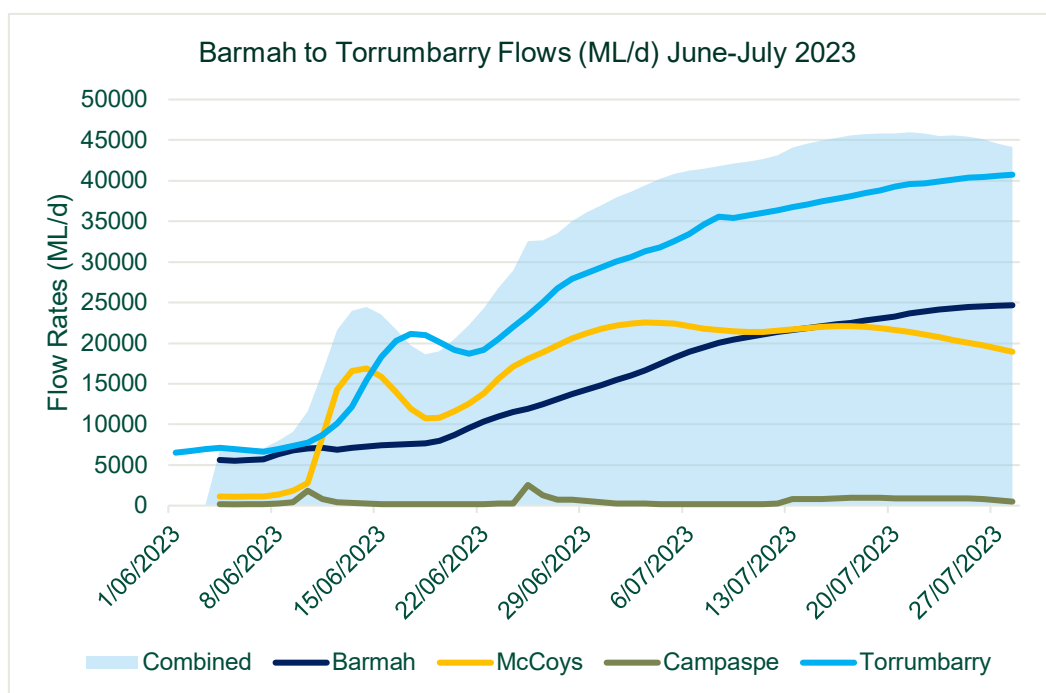


Figure 2: Water flow (ML/d) in the Murray River, Goulburn River and Campaspe River

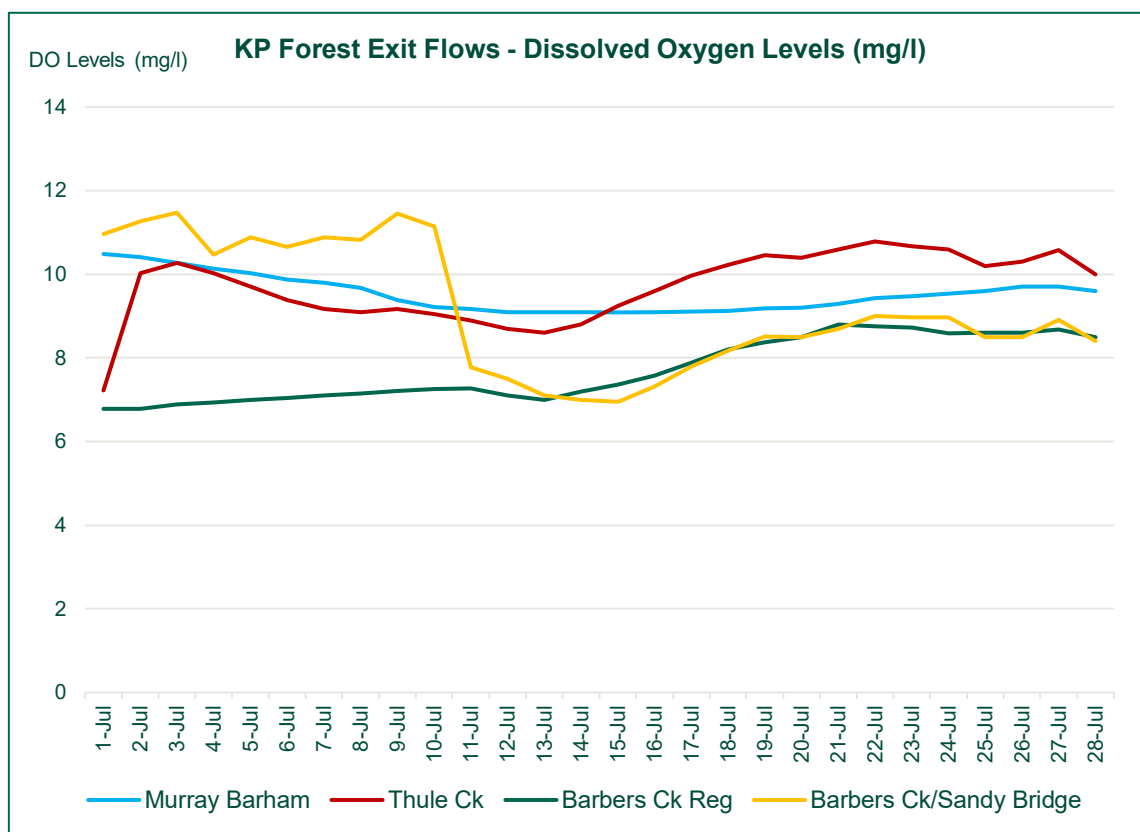
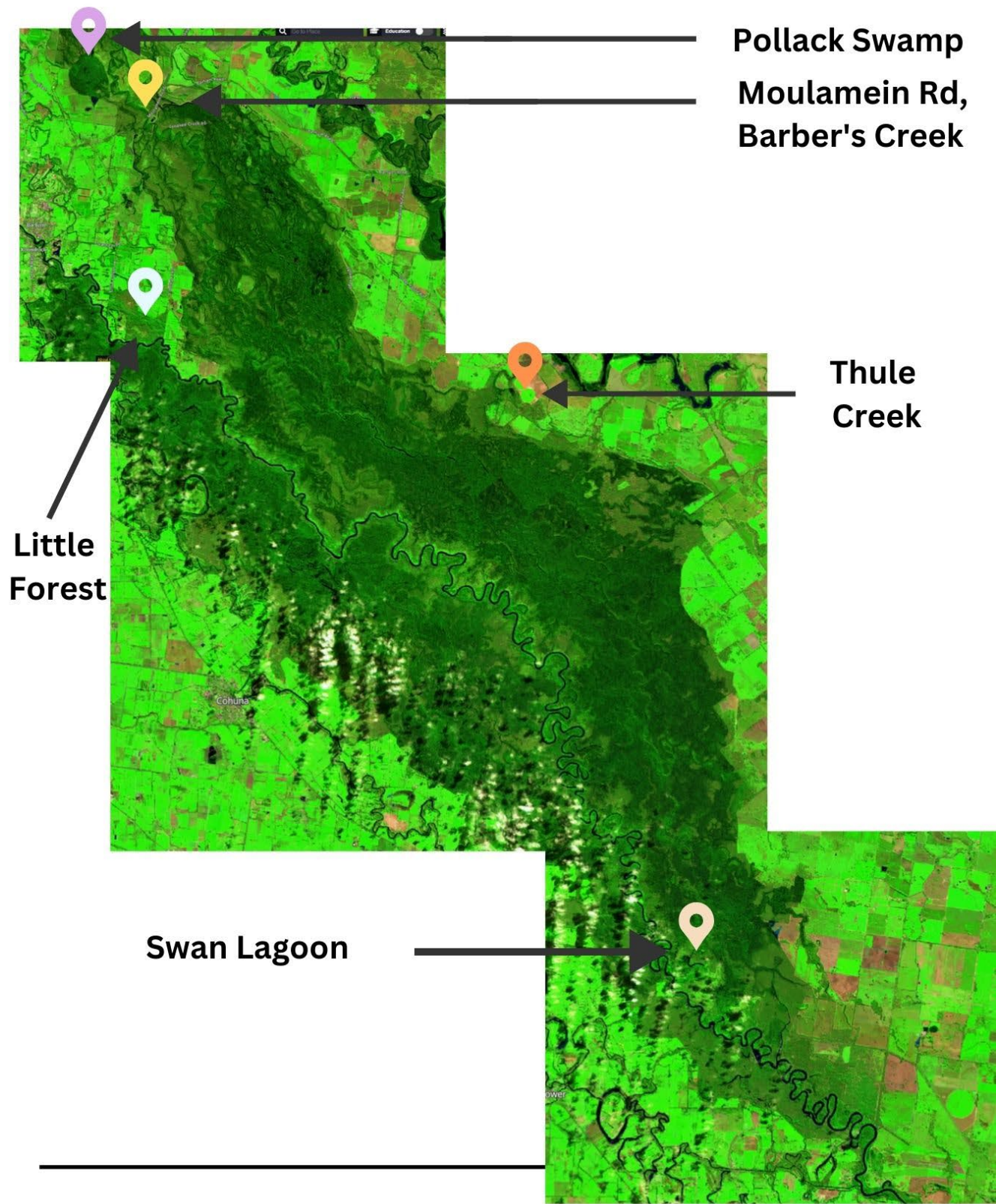


Figure 3: KP Forest Exit Flows, dissolved oxygen levels (mg/L)

KOONDROOK-PERRICOOTA FOREST SATELLITE IMAGERY

24th July 2023



Sentinel Hub

Maggie McDonald



Figure 3. Aquatic vegetation response in the Box country near Bullock Head Swamp , 27/07/23



Figure 5. Water running fast over River Rd near the inlet channel, 25/07/23



Figure 6. Inlet regulator closed, 25/07/2



Figure 7. Flood water clarity, 27/07/2



Figure 8. Water ribbon response in the Box country near Bullock Head Swamp , 27/07/23



Figure 9. Bullock Head Swamp, 27/07/23



Figure 10. Frogspawn, 27/07/23