

KPF 2023 OBE Update #3, 21st of July, 2023

- Flows into KPF have continued steadily over the last week with the water quickly moving out into the floodplain
- A graph has been supplied that indicates the flows (ML/d) at both the Torrumbarry Weir and Barham township since the 1st of June, the commence to flow thresholds are also depicted on this first graph
- The second graph supplied depicts the flows in the Murray River, Goulburn River and Campaspe River at key locations since the 1st of June
- We finally have a cracker of a satellite image from this Wednesday the 19th of July- I have included a copy of this image below; however here is the link to the free website if you would like to have a play around yourself

[Sentinel Hub EO Browser \(sentinel-hub.com\)](https://sentinel-hub.com)

- The Pollack Swamp started receiving inflows on Sunday, there are some pictures below of the Pollack Creek flowing into the swamp, outflows started on Tuesday through the swamp and lagoon
- Water has been entering the Thule Lagoon system since the 7th of July and it is rapidly rising
- The dissolved oxygen levels have stayed consistently high, after a small dip when outflows from the forest first started, which is to be expected at this time of year, nonetheless it is fantastic for the forest to be getting some fresh good quality water through the system
- A third graph has been supplied to depict the dissolved oxygen levels (mg/L) in the exit flows from the forest
- The ecosystem is responding quickly to the water and the plants, trees, birds and frogs are loving it, even though it is the middle of Winter

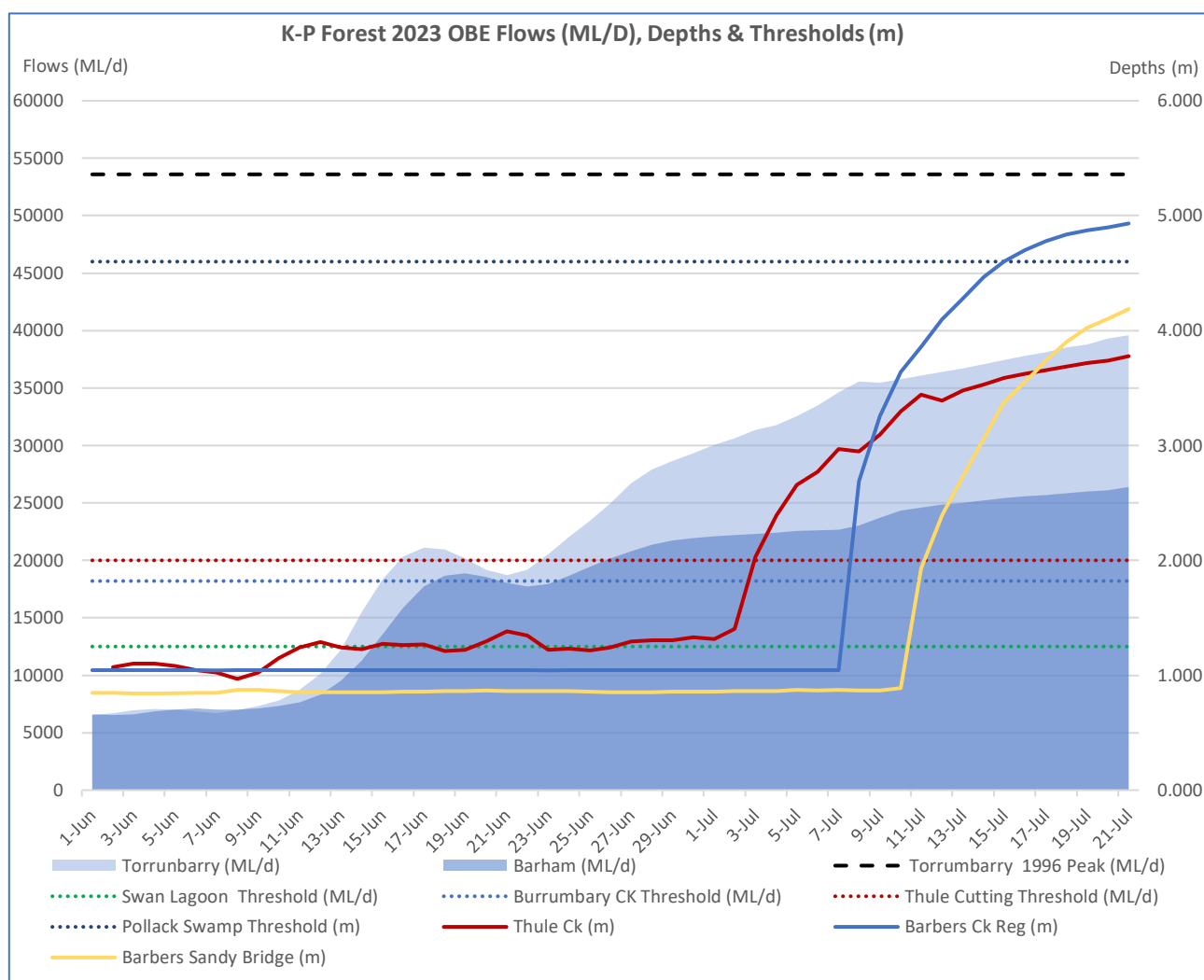


Figure 1: Hydrograph showing Murray River flows (ML/d) and KPF inflow thresholds (ML/d)

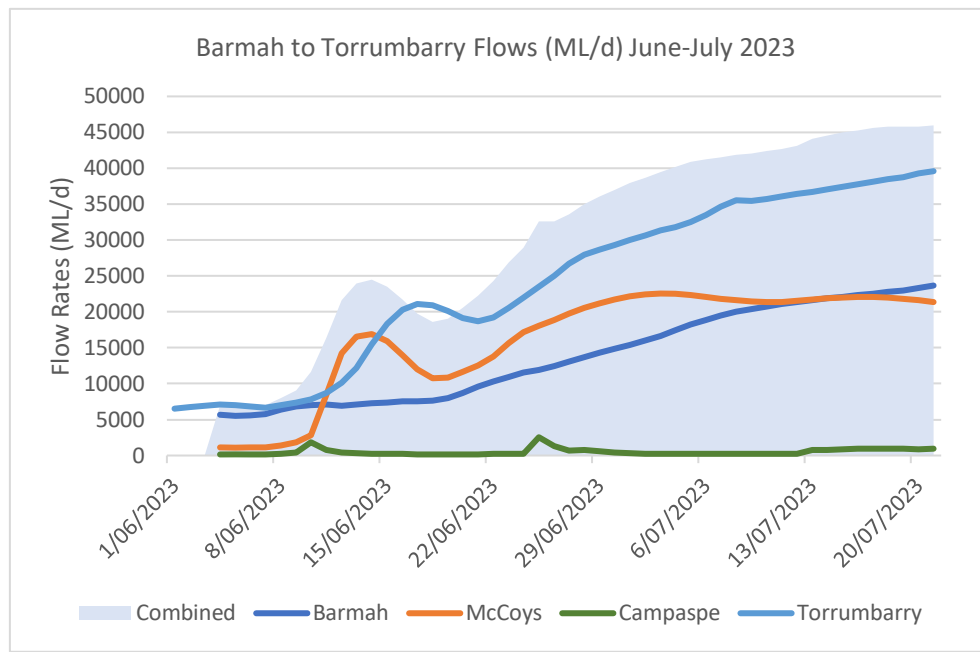


Figure 2: Water flow (ML/d) in the Murray River, Goulburn River and Campaspe River

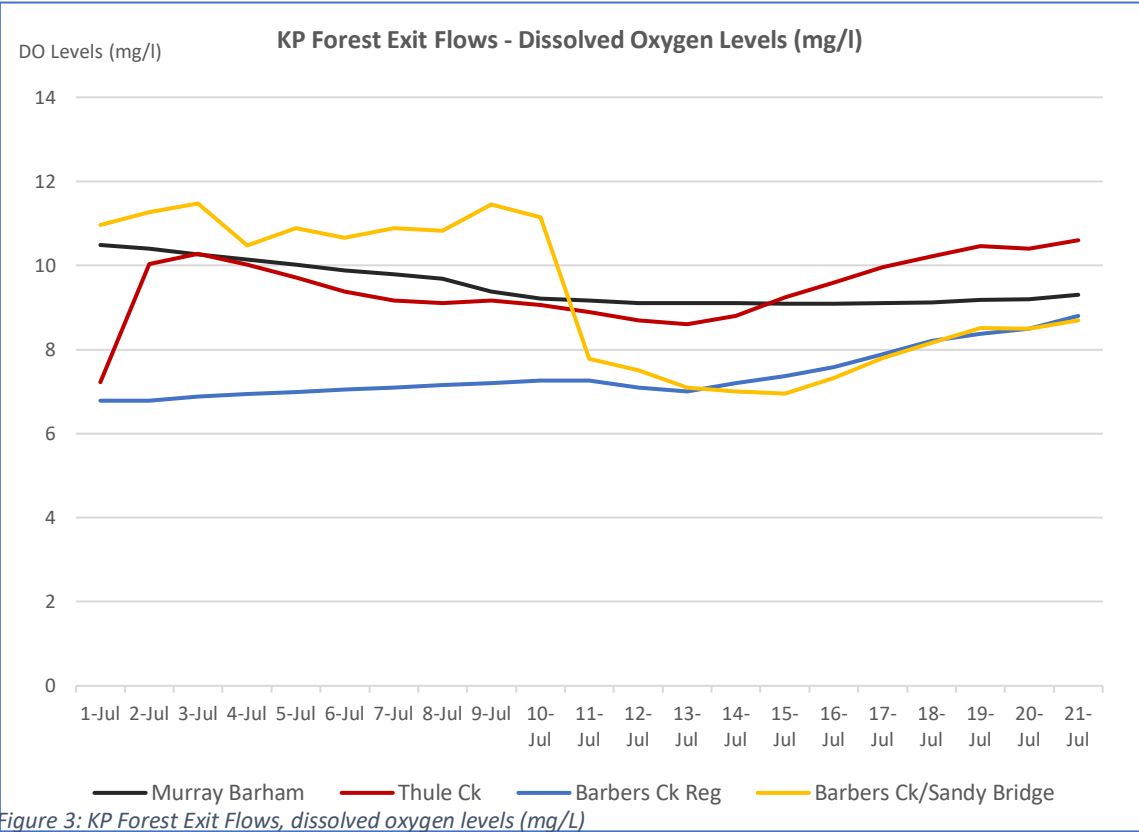
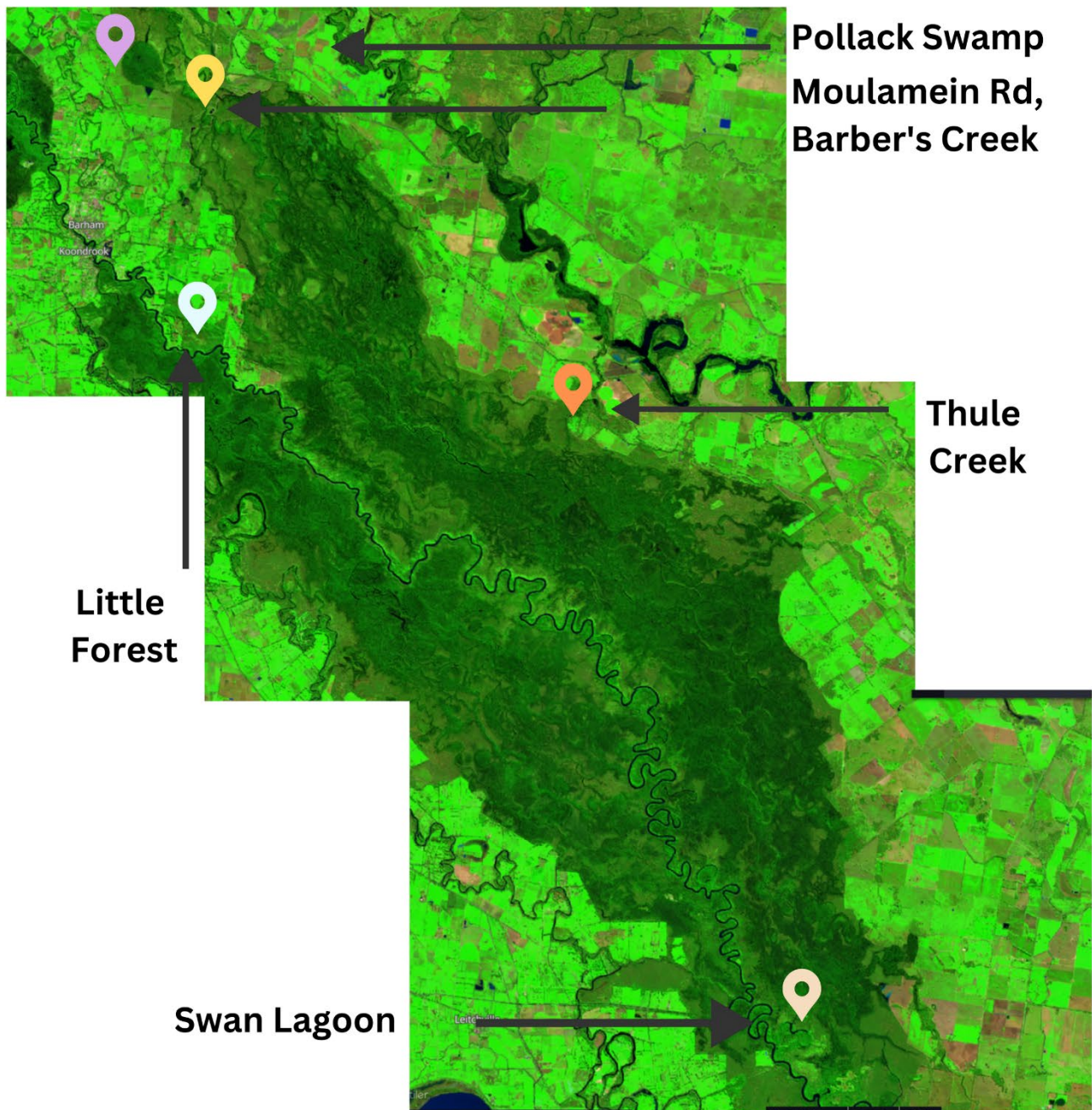


Figure 3: KP Forest Exit Flows, dissolved oxygen levels (mg/L)

KOONDROOK-PERRICOOTA FOREST SATELLITE IMAGERY

19th July 2023



Sentinel Hub

Maggie McDonald



Figure 3. Water entering the Pollack Swamp via the Pollack Ck, 17/07/23



Figure 5. Barbers Ck Regulator, 18/07/23



Figure 6. Barber's Ck, 17/07/2



Figure 7. Pollack Ck offtake Barber's Ck, 17/07/2