

KPF 2023 OBE Update #1, 4th of July, 2023

- Water begun entering the Swan Lagoon on the 14th of June 2023 and by the 16th of June water was exiting Swan Lagoon and into the Burrumbary’s
- A graph has been supplied that indicates the flows (ML/d) at both the Torrumbarry Weir and Barham township since the 1st of June, the commence to flow thresholds are also depicted on this first graph
- The second graph supplied depicts the flows in the Murray River, Goulburn River and Campaspe River at key locations since the 1st of June
- Thirdly a satellite image from the 29th of June has been supplied to depict some of the water movement throughout the forest, however; the cloudy weather has prevented a high-quality satellite image from being produced over the last week
- Thus far water seems to be travelling through the forest at a faster rate than “normal”, most likely due to the fact that this is the second year in a row KP Forest is receiving OB inflow
- On the 20th of June water in the Burrumbary Ck was already flowing over Belbin’s Rd (a mid-point of the forest)
- Over the last 2 days (5-7 July) water in the Thule Ck has reached the regulator into the Thule Lagoon system

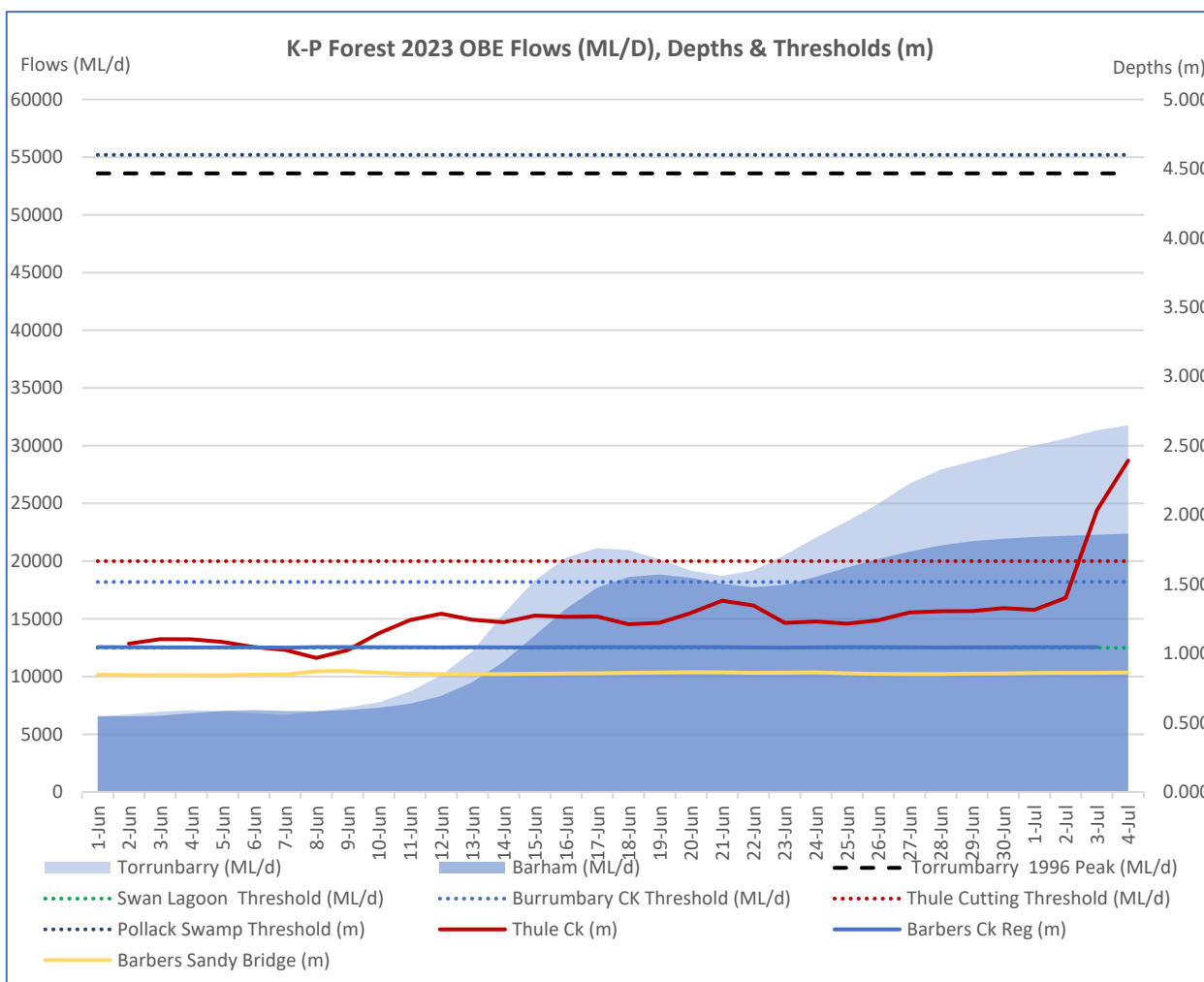


Figure 1: Hydrograph showing Murray River flows (ML/d) and KPF inflow thresholds (ML/d)

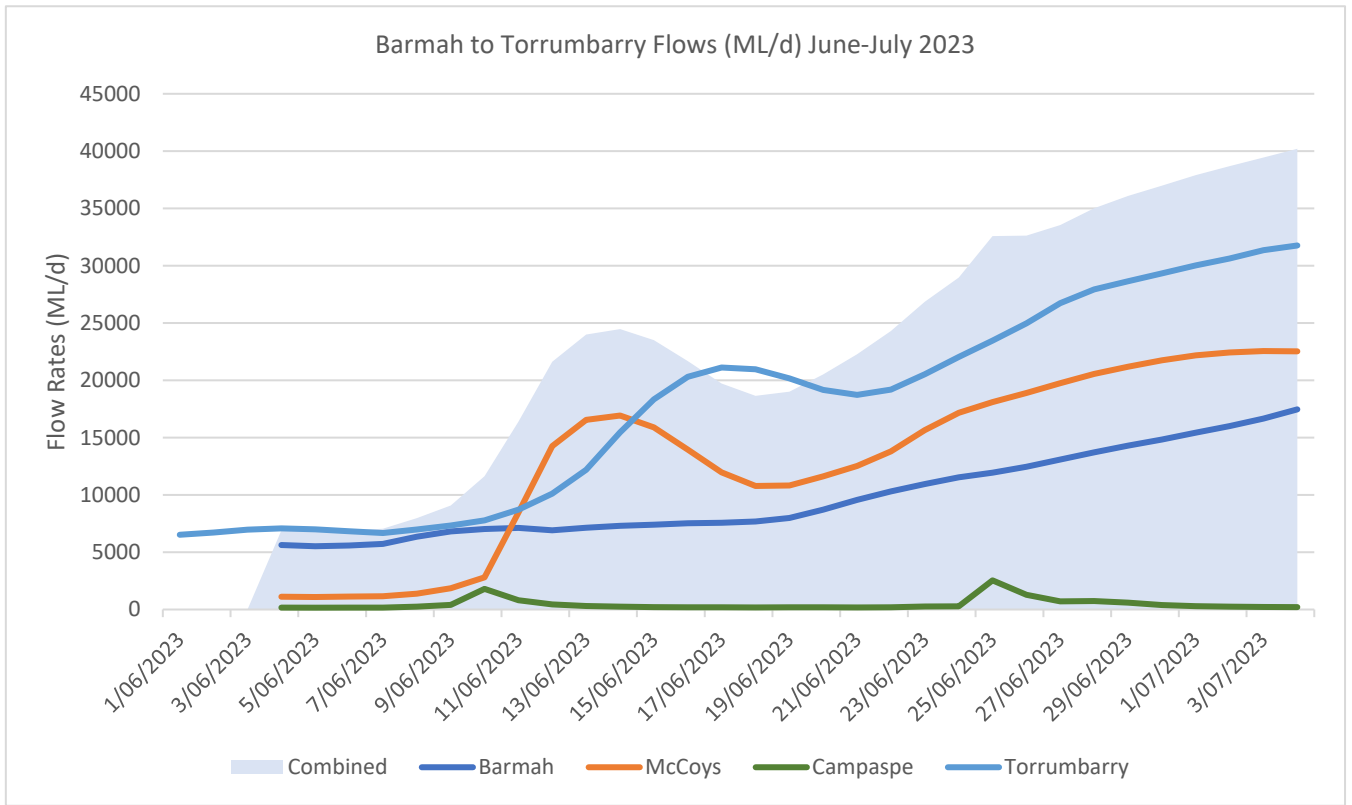


Figure 2: Water flow (ML/d) in the Murray River, Goulburn River and Campaspe River

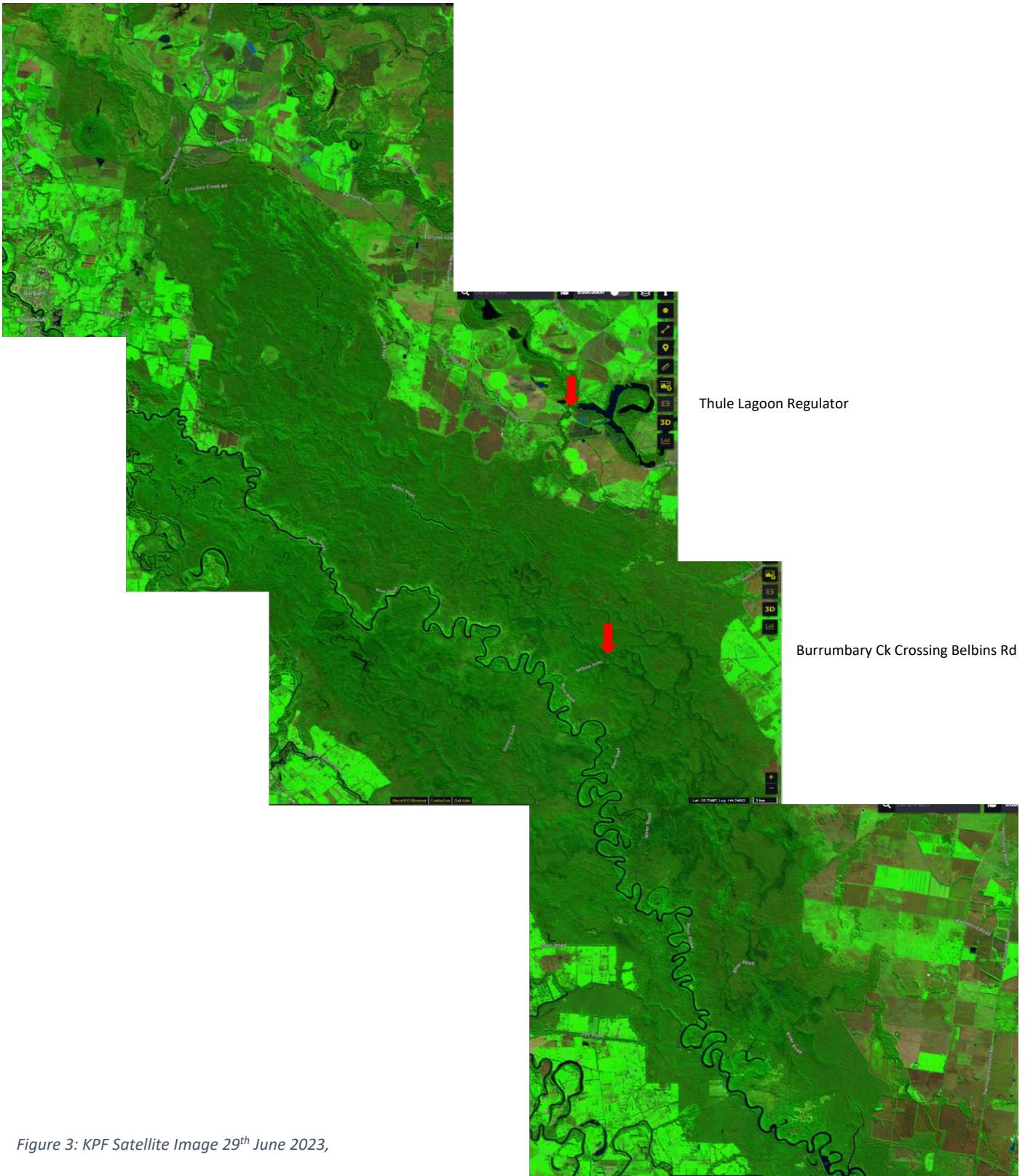


Figure 3: KPF Satellite Image 29th June 2023,
 source- Sentinel Hub