

- Flows remain high in our region, close to peak levels, whilst slowly receding
- Exit flows; the Thule Creek depth has dropped quickly whilst the Barbers Creek has dropped slightly
- DO levels remain critically low, the warmer weather has seen DO levels crash again throughout the system
- Ewater refuge deliveries are continuing over the coming week at small rates
- Satellite image from the 6th of November had some cloud but is a fantastic image showing how much of KP is under water...only two sandhills are dry in the whole forest!

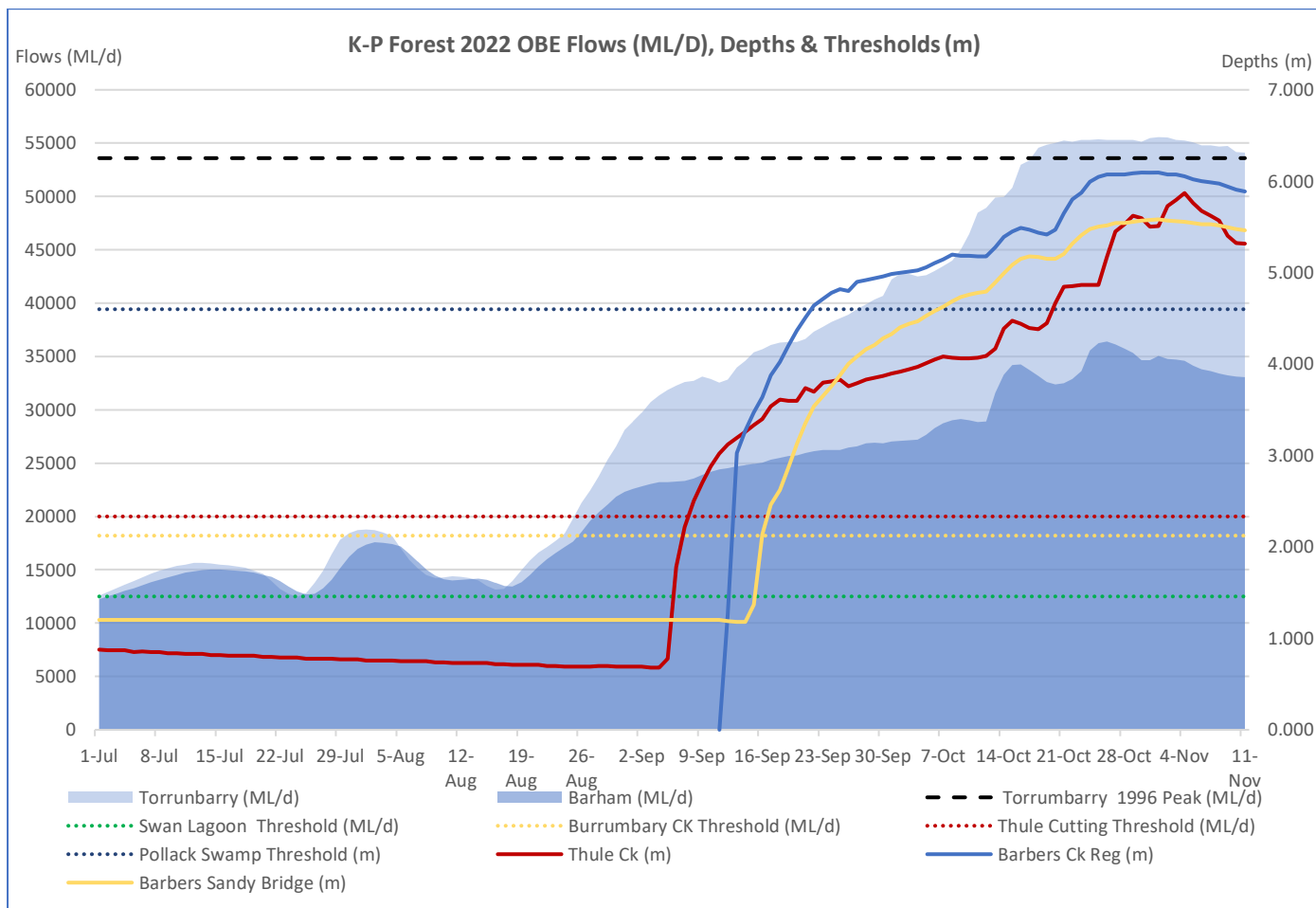


Figure 1: Hydrograph showing Murray River flows (ML/d), KPF inflow thresholds (ML/d), and exit flows (m)

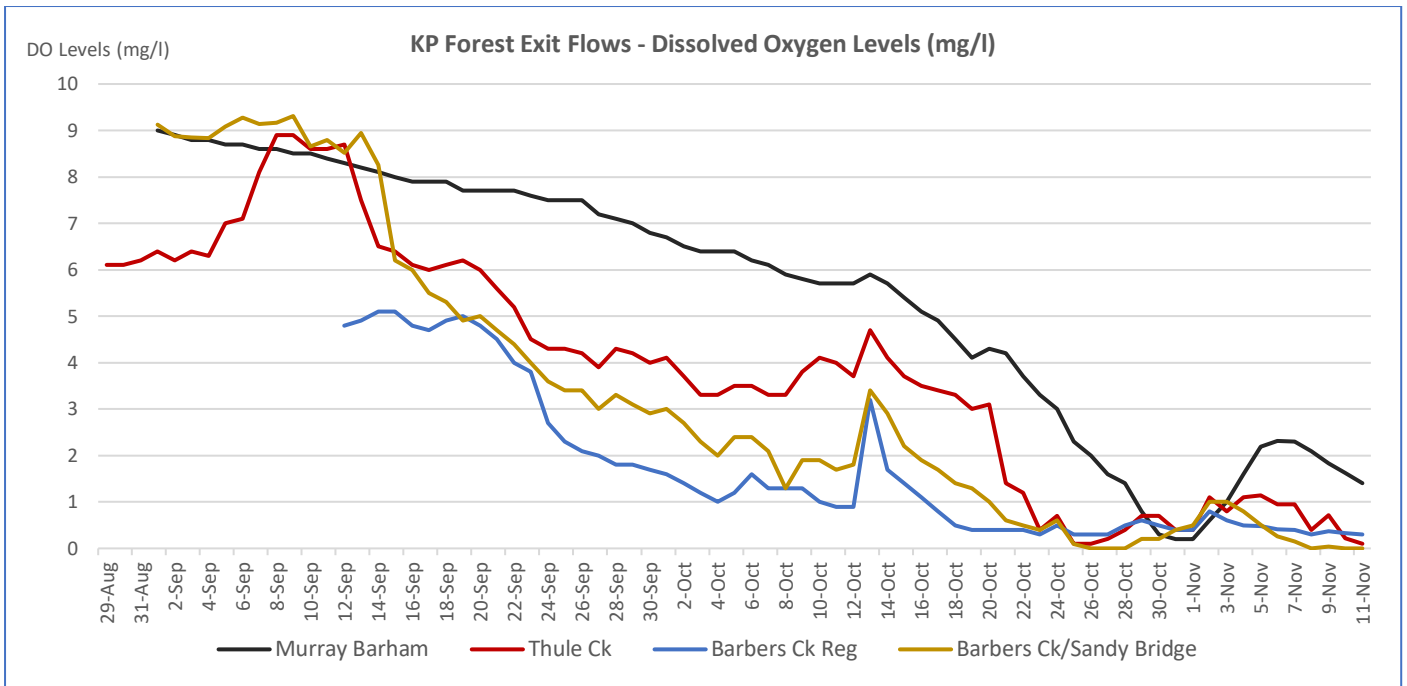


Figure 2: K-P Forest exit flow depths (m) & dissolved oxygen levels (mg/l)

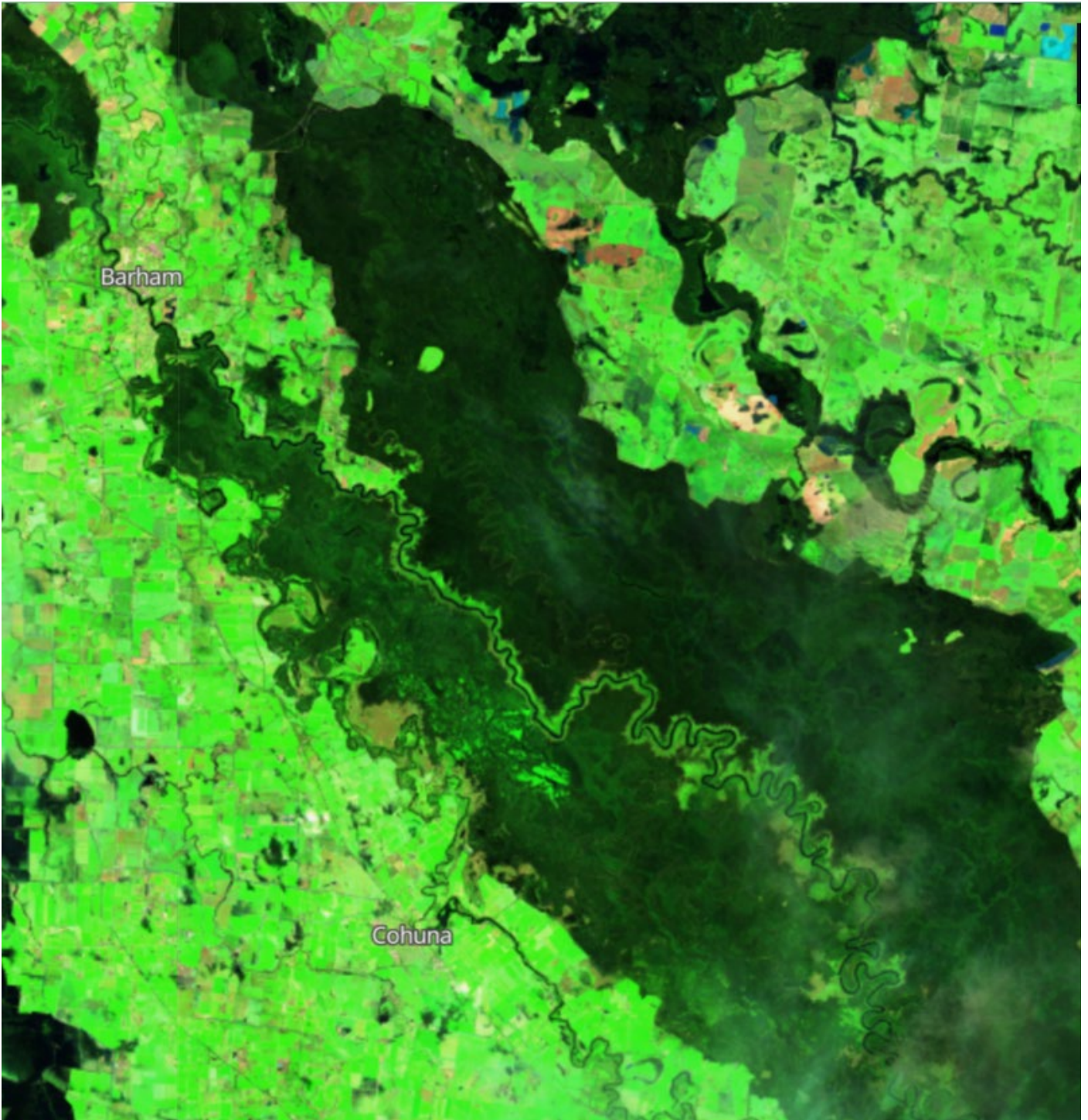


Figure 3. Satellite image 6th November, (source: sentinel hub)



Figure 4: Wakool-Murray River junction 9th November 2022



Figure 5: Murrumbidgee-Murray junction 9th November 2022

