

KPF 2022 OBE Update W/E 14th October 2022

- Inflows to K-P Forest have commence upstream of Torrumbarry weir
- Flows D/S at Torrumbarry have reached 50,000ML/d and 33,000ML/d at Barham and continue to rise
- Exit flows from K-P Forest continue at Thule (4,100ML/d) & the Barbers Creek system (7,400ML/d)
- Through flows continue at the Pollack
- Flows from Thule Ck have progressed right through Thule Lagoons, depth continues to rise
- Recent rains have raised DO levels within the Murray River and KP Forest exit flows; >4mg/l at Thule Ck and >3mg/l at Barbers Ck
- Refuge flows continue at Thule, Wakool, Yarraman, Niemur, Mallan, Mascot, Bunaloo & Yallakool escapes.

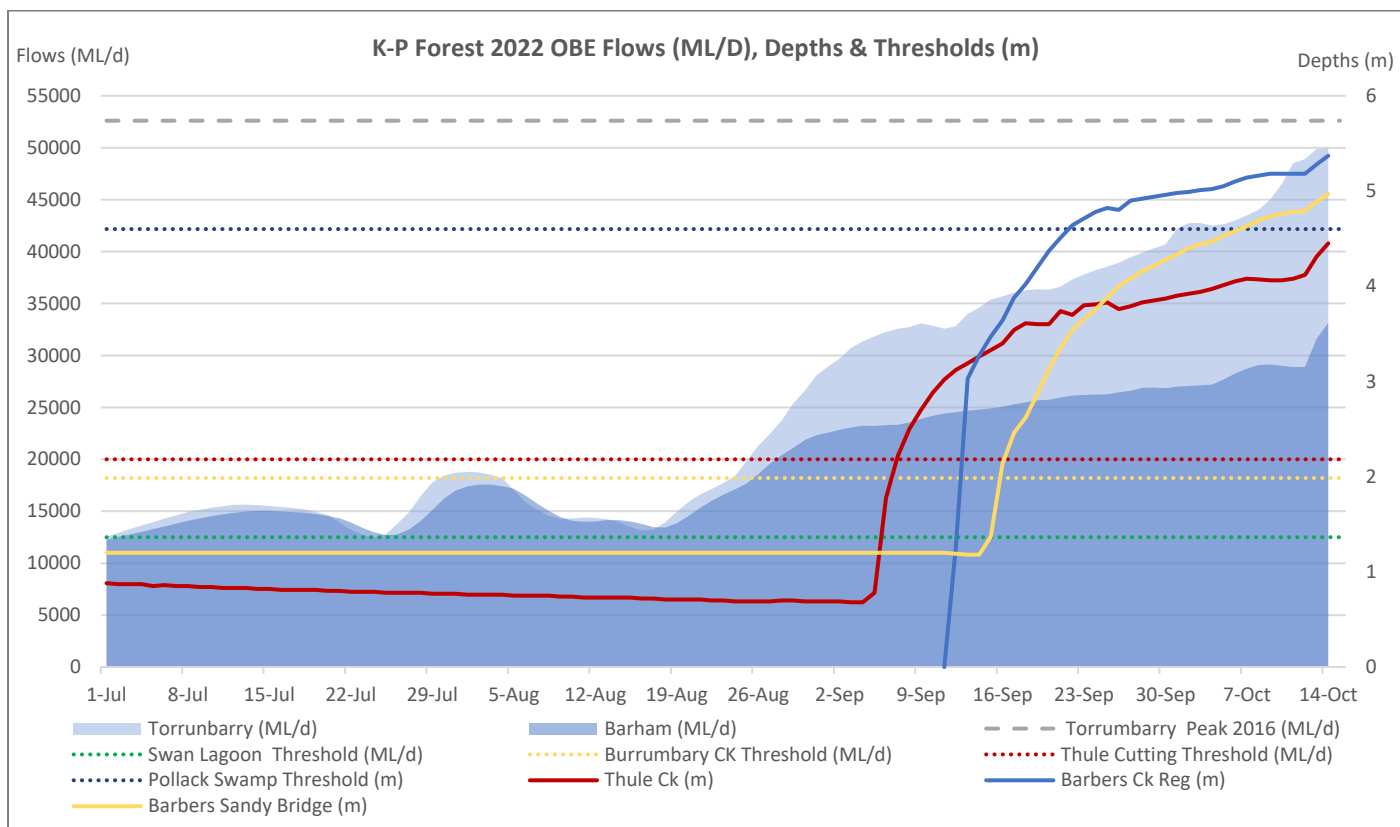


Figure 1: Hydrograph showing Murray River flows (ML/d), KPF inflow thresholds (ML/d), and exit flows (m)

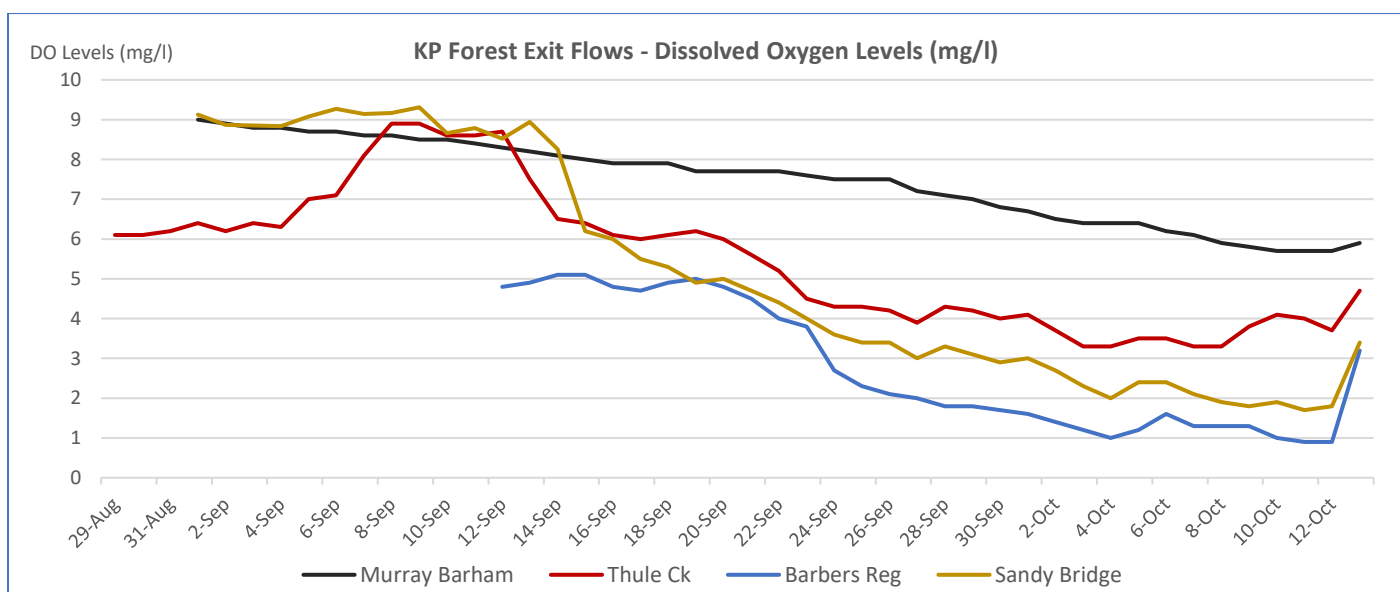


Figure 2: K-P Forest exit flow depths (m) & dissolved oxygen levels (mg/

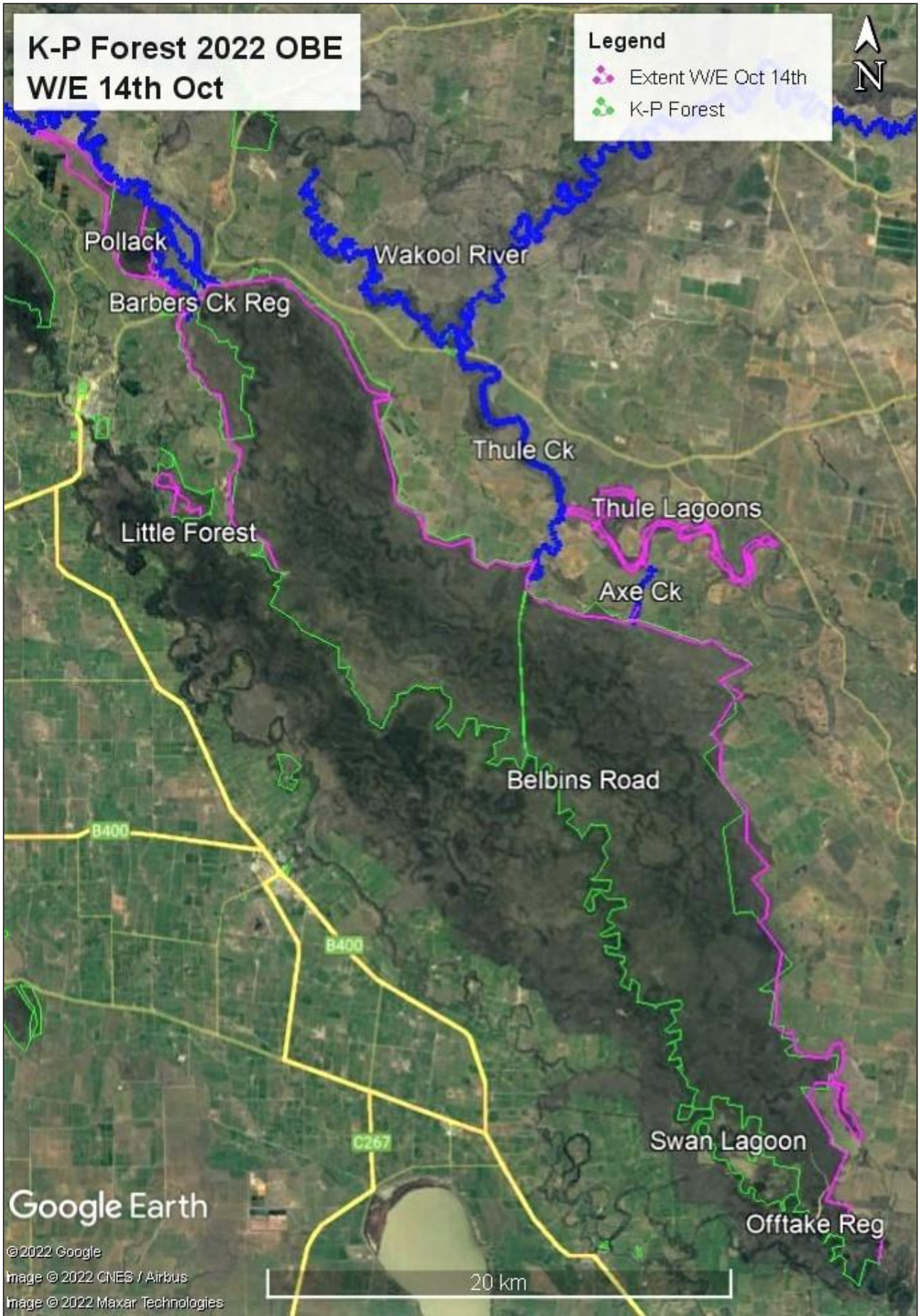


Figure 3: Map indicating the approximate extent of flooding through K-P Forest

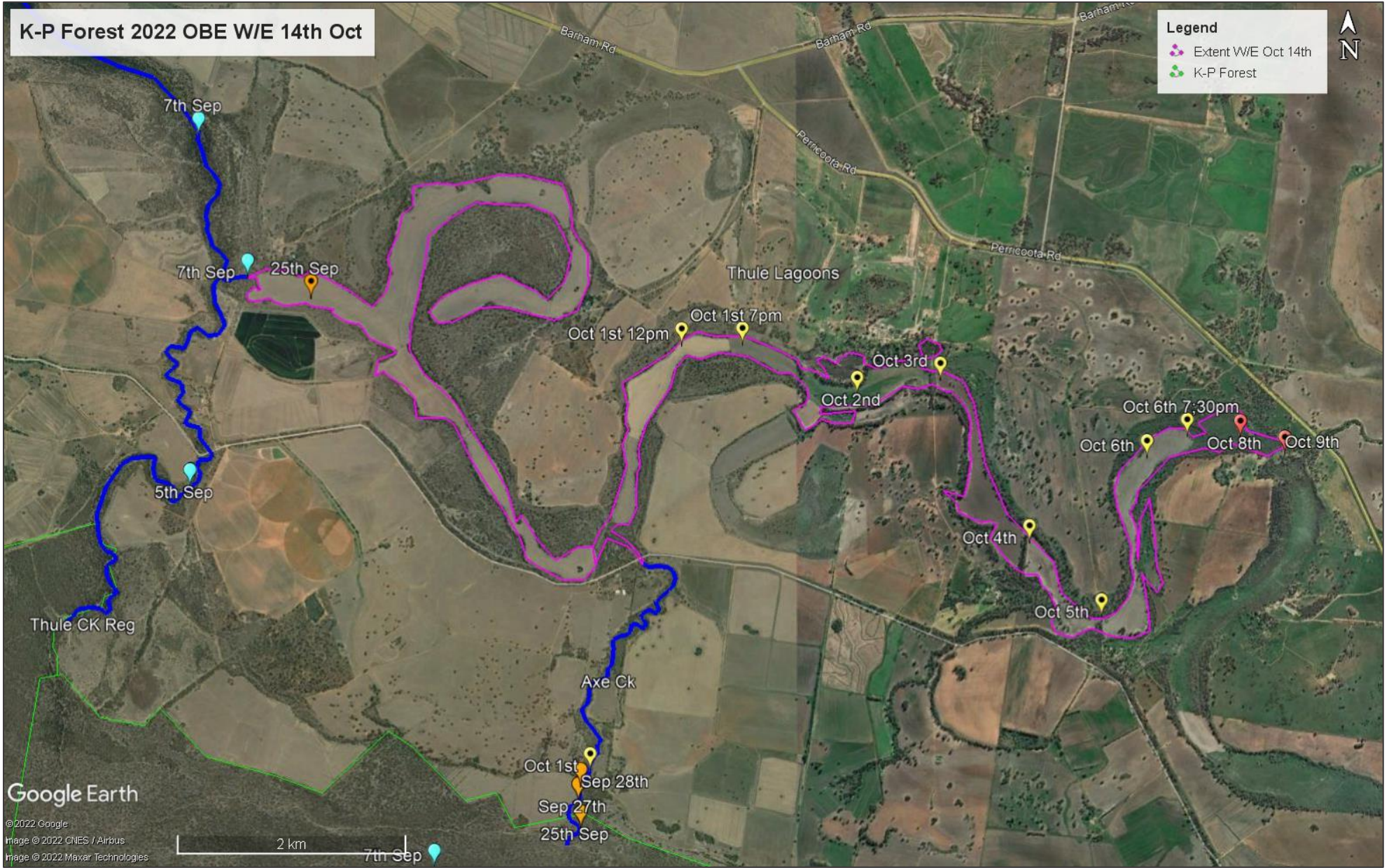


Figure 4: Map indicating the progression and extend of flooding within the Thule Lagoons system