

KPF 2022 OBE Update W/E 7th October 2022

- Flows D/S at Torrumbarry exceed 43,000ML/d and 28,000ML/day at Barham, both continue to rise
- Exit flows from K-P Forest continue at Thule, Barbers, Barbers Overflow, Cow & Calf Creeks
- Through flows continue at the Pollack
- Flows from Thule Ck continue entering Thule Lagoon, the Axe Ck has not yet commence to flow
- DO levels within the Murray River continue to fall, levels of KP Forest exit flows have stabilised at 3.5mg/l at Thule Ck, <2mg/l at Barbers Ck reg
- Refuge flows continue at Thule, Wakool, Yarraman, Niemur, Mallan, Mascot, Bunaloo & Yallakool escapes.

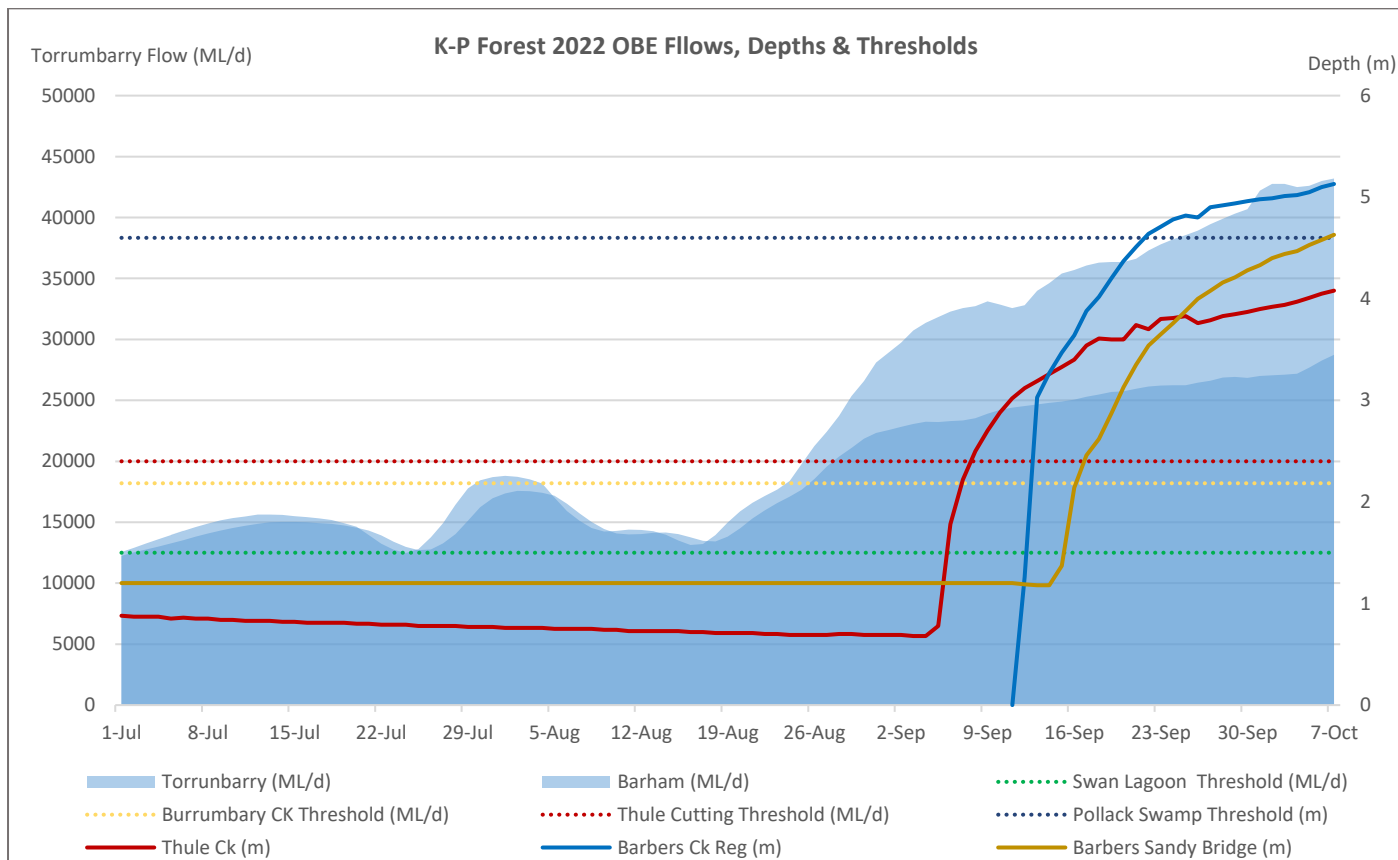


Figure 1: Hydrograph showing Murray River flows (ML/d), KPF inflow thresholds (ML/d), and exit flows (m)

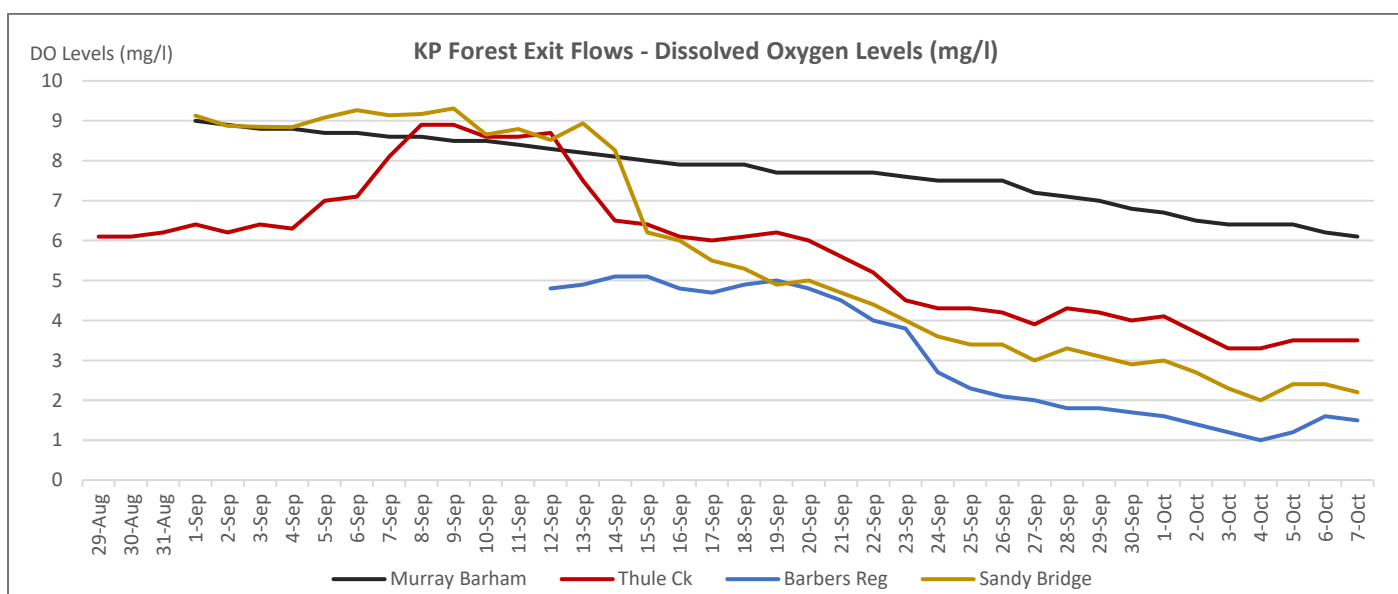


Figure 2: K-P Forest exit flow depths (m) & dissolved oxygen levels (mg/l)

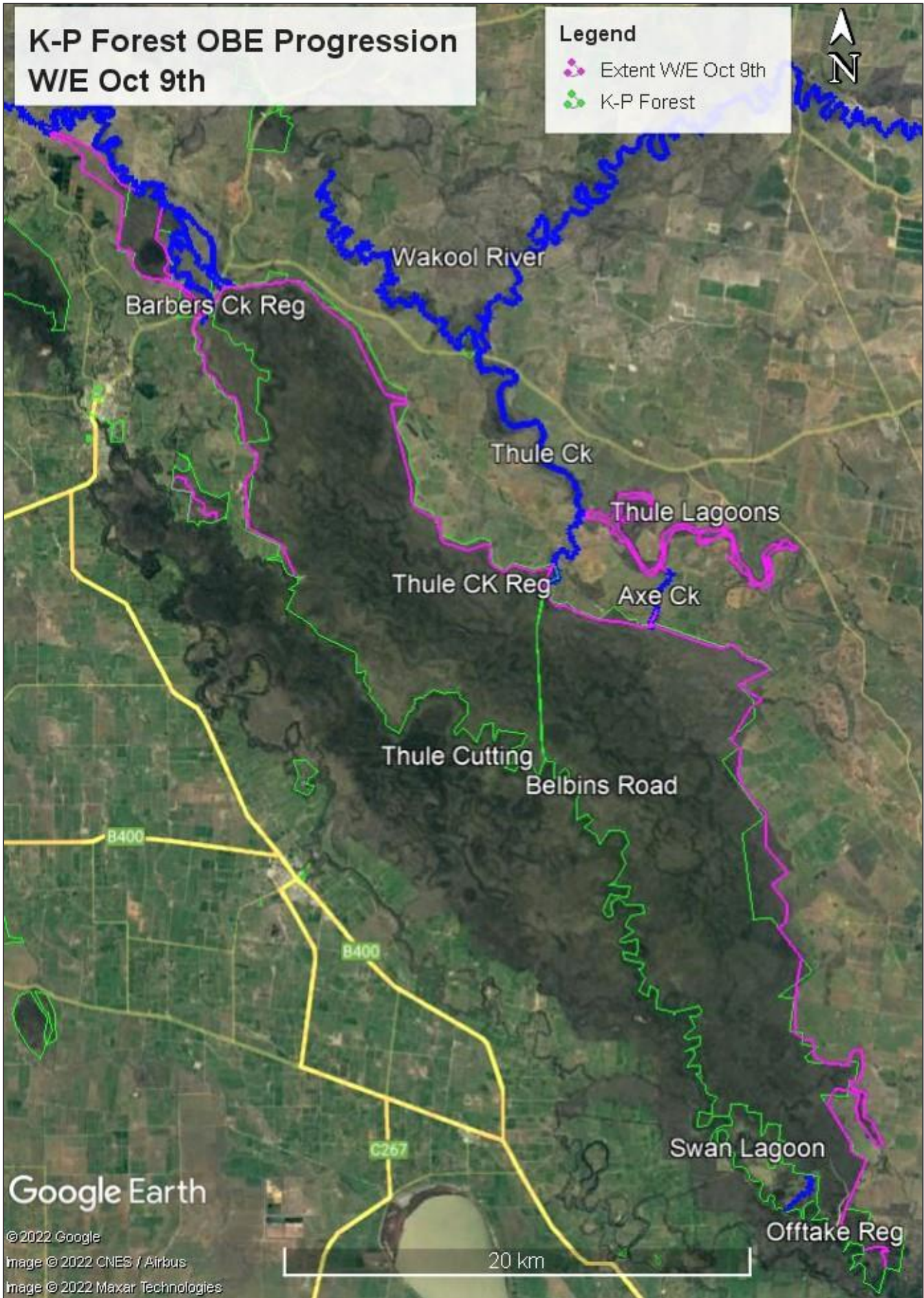


Figure 3: Map indicating the approximate extent of flooding through K-P Forest

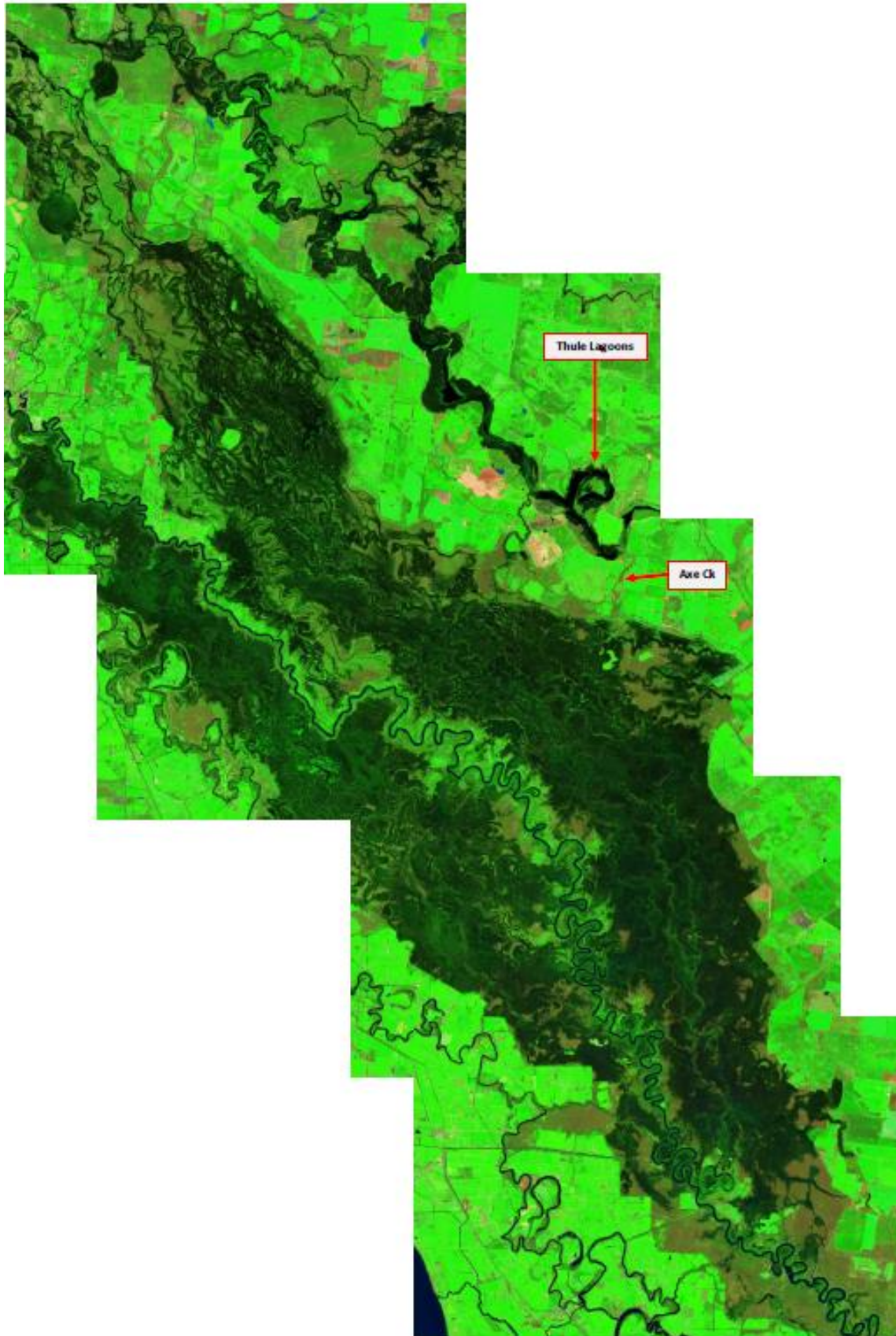


Figure 4: Sentinel Landsat 2 image 3rd October

Data collated from <https://livedata.mdba.gov.au/system-view> <https://realtimedata.watersw.com.au/> <https://www.sentinel-hub.com/explore/sentinelplayground/> and Forestry & community observations.



Figure 5: Thule Lagoons at Glencoe 6th October (Maggie McDonald)