

## KPF 2022 OBE Update W/E 16<sup>th</sup> September 2022

- Torrumbarry D/S flows remained above 30,000ML/d
- Exit flows continue at Thule Ck
- Exit flows commenced at Barbers Ck, Cow Ck & Barbers Overflow Regulator
- Exit flows down Barber Ck reached Sandy Bridge
- DO levels of exit flows continue to fall, all are now 6mg/l or less
- Refuge flows via Thule & Wakool escapes scheduled to commence 17<sup>th</sup> Sept.

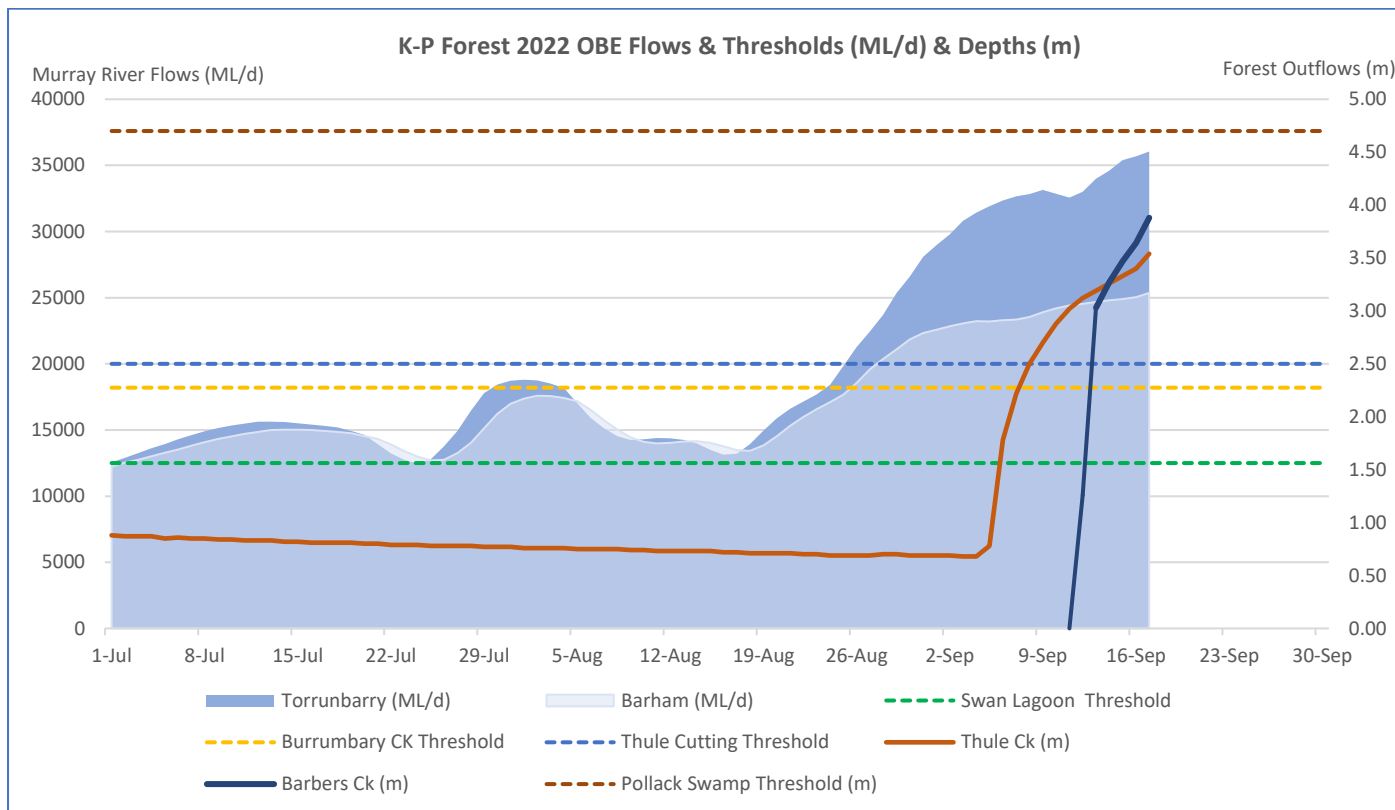


Figure 1: Hydrograph showing Murray River flows and KPF inflow thresholds (ML/d), and exit flows (m)

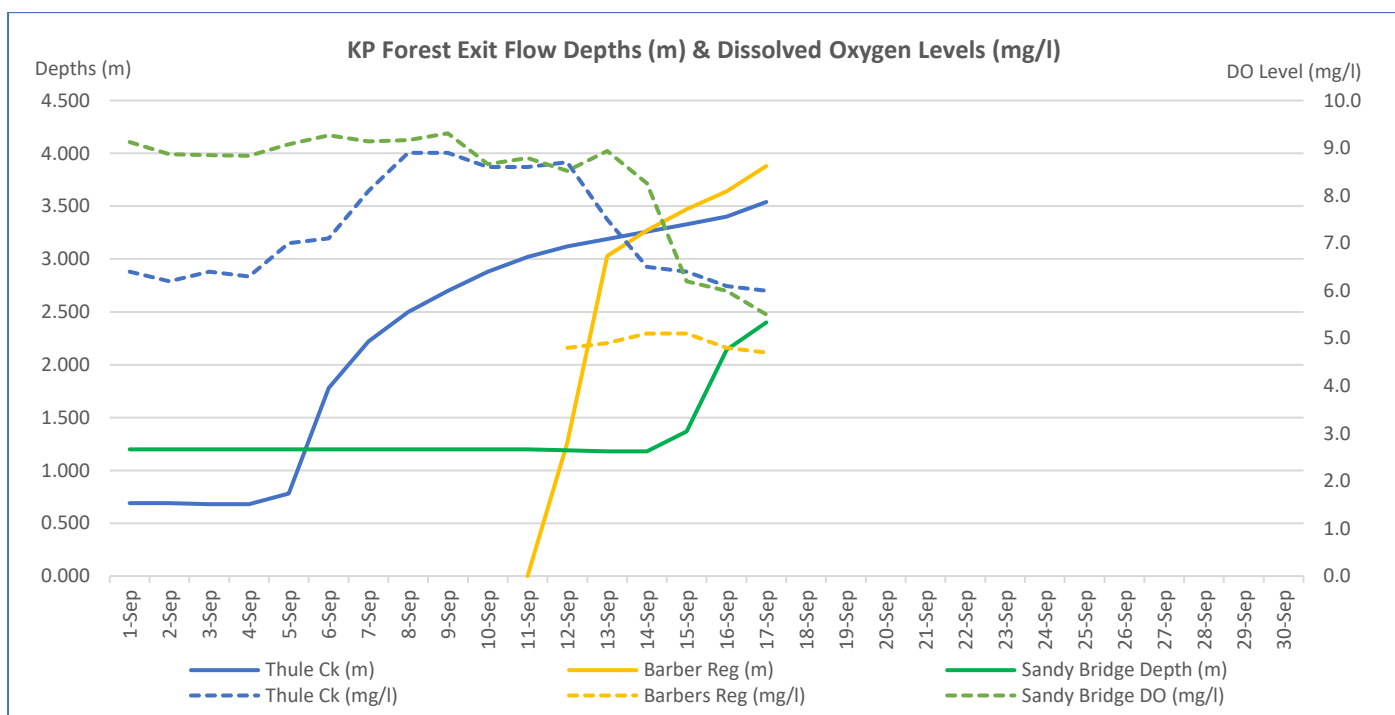


Figure 2: KP Forest exit flow depths (m) & dissolved oxygen levels (mg/l)

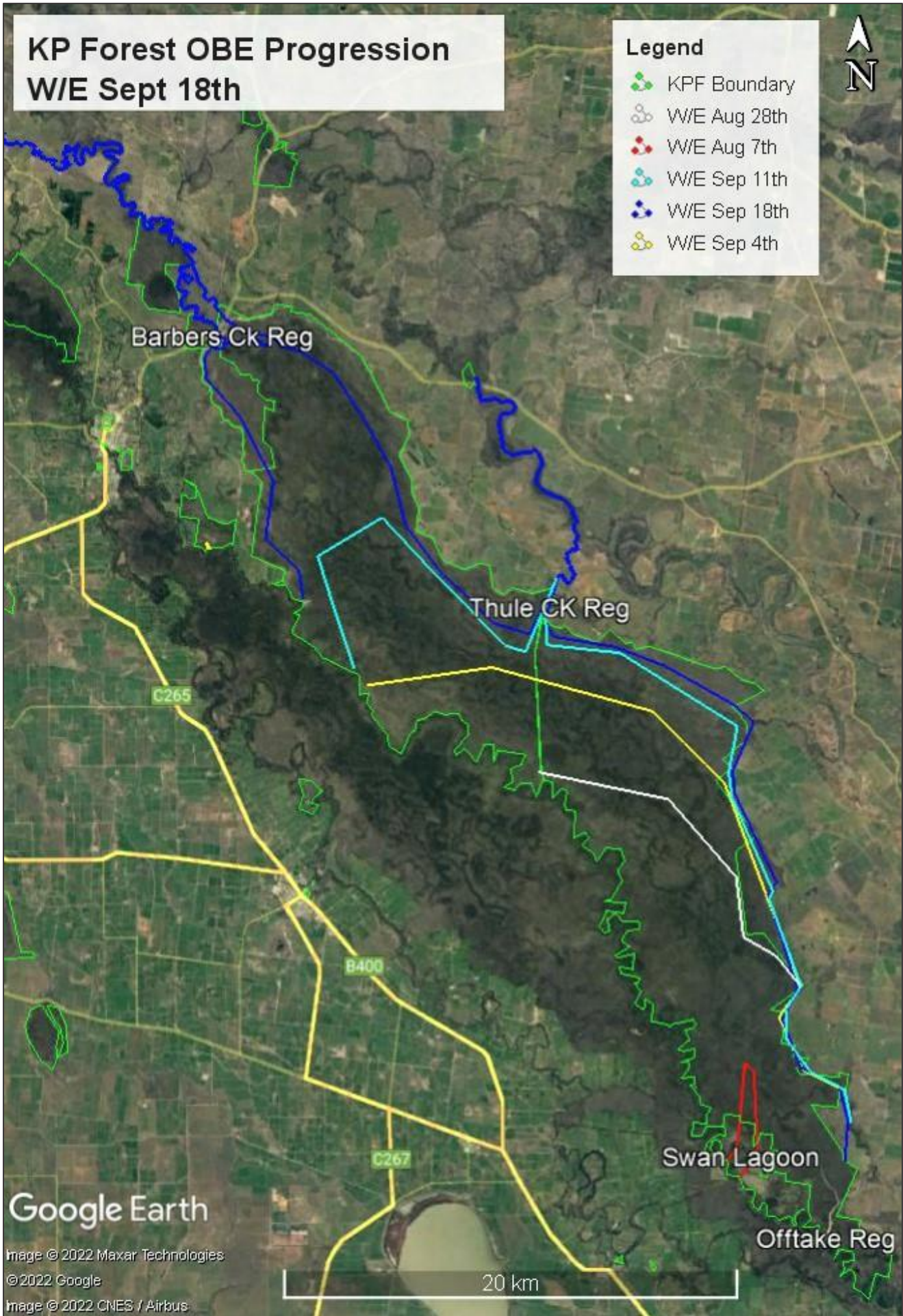


Figure 3: Map indicating the approximate OBE flow progression through KPF

Data collated from <https://livedata.mdba.gov.au/system-view> <https://realtimedata.watersnsw.com.au/> <https://www.sentinel-hub.com/explore/sentinelplayground/> and Forestry observations.

No satellite image available due to cloud cover



Figure 4: Barber Overflow regulator 16<sup>th</sup> Sept (Montana Jones)



Figure 5: Cow Ck regulator 16<sup>th</sup> Sept (Montana Jones)