

- Flows remain high in our region, whilst beginning to recede
- Dissolved Oxygen levels remain critically low

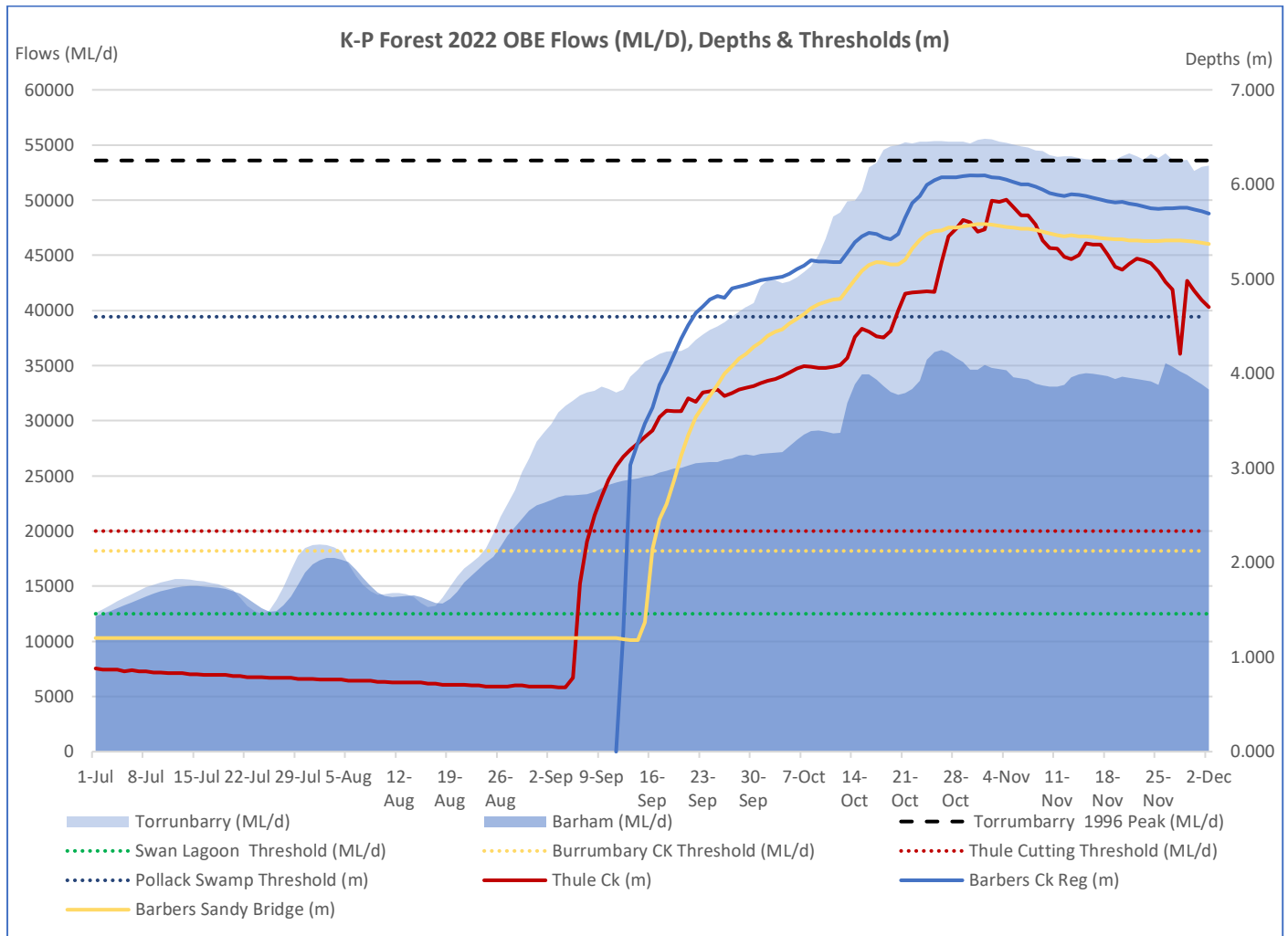


Figure 1: Hydrograph showing Murray River flows (ML/d), KPF inflow thresholds (ML/d), and exit flows (m)

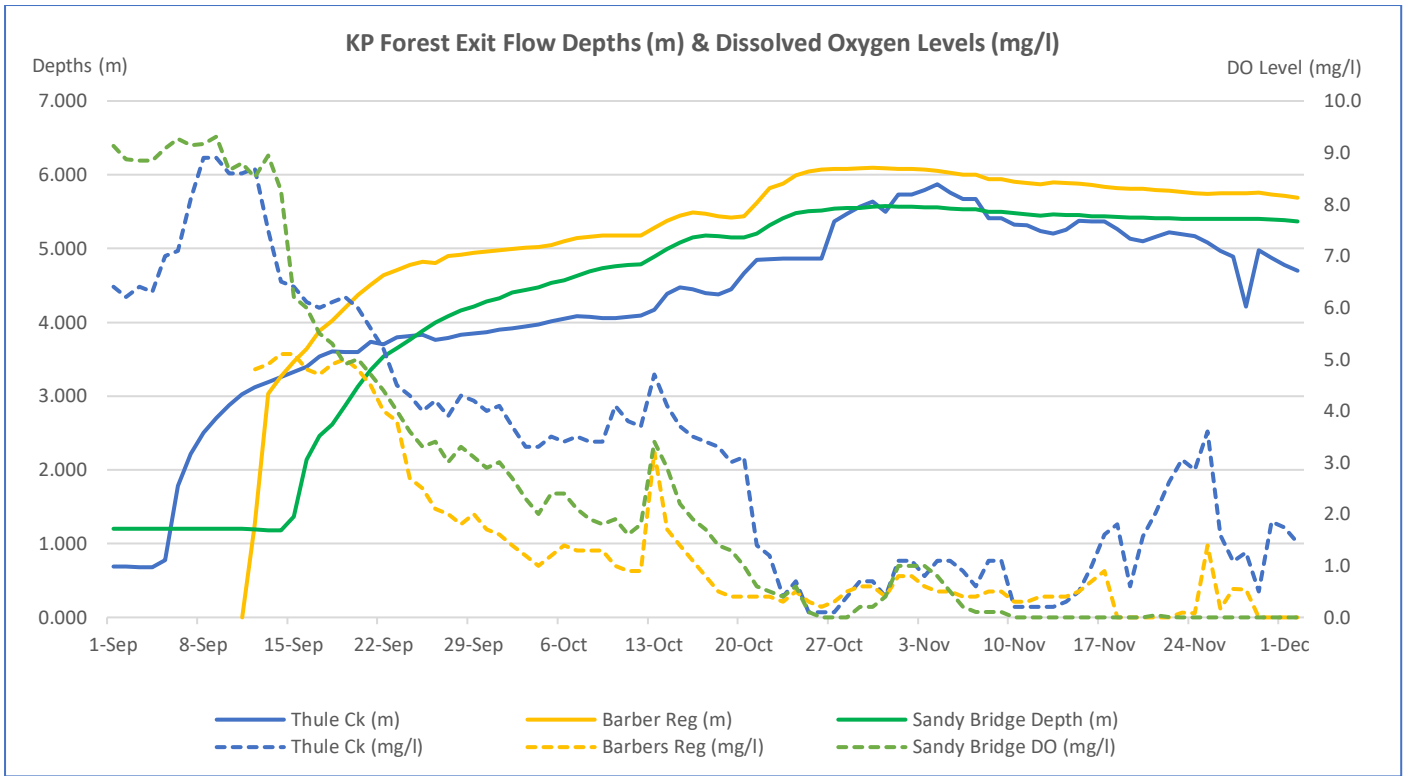


Figure 2: K-P Forest exit flow depths (m) & dissolved oxygen levels (mg/l)

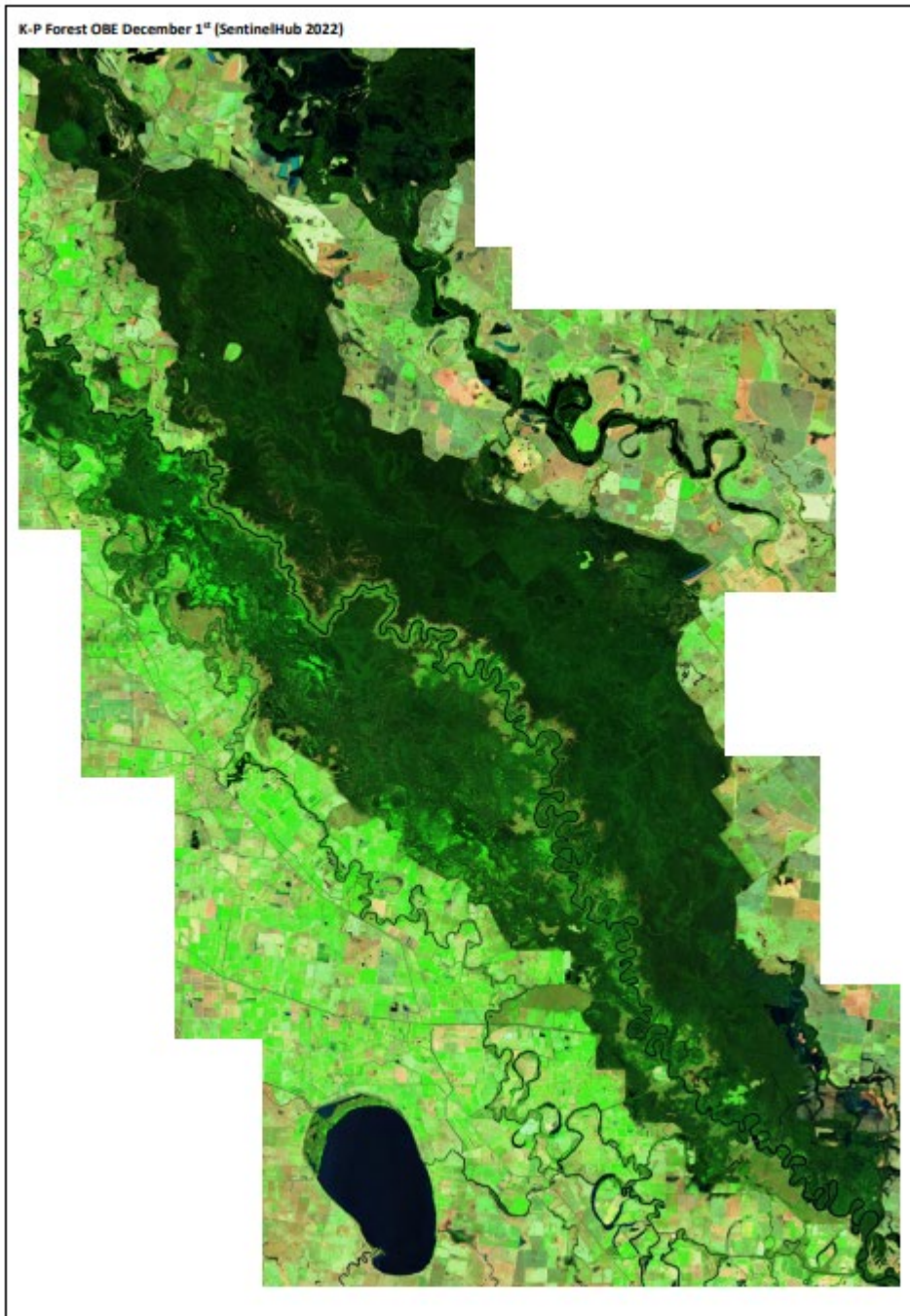


Figure 3: Satellite image, Koondrook-Perricoota Forest, 1 December 2022, source: Sentinel Hub