

Figure 1: Hydrograph showing Murray River flows and KPF inflow thresholds (ML/d), and exit flows (m)

Table 1: Dissolved oxygen levels within KPF

2022 KPF OBE Water Quality

Date	Location	Time	Water (°C)	DO %	DO (mg/L)	
22/08/2022	Marywood Rd	8:55	11.6	46.7	5.11	
22/08/2022	Horseshoe Lagoon	13:20	11.4	86.3	9.07	
25/08/2022	Thule Cutting	8:40	11.5	80.1	8.73	0.4m slow flow
31/08/2022	Burrumbary/Marywood Rd	10:00	11.8	80.9	8.76	Flowing
31/08/2022	Burrumbary/Belbin's Rd	12:00	12.4	46.8	5.00	Flowing 0.5m
7/09/2022	McMahons Waterhole	11:35	13.5	52.7	5.49	Flowing
7/09/2022	Thule flood runner Fence Rd	12:10	14.1	68.4	7.04	Flowing
7/09/2022	Pothole Ck/Belbin's Rd	13:50	15.1	59.6	6.00	Flowing

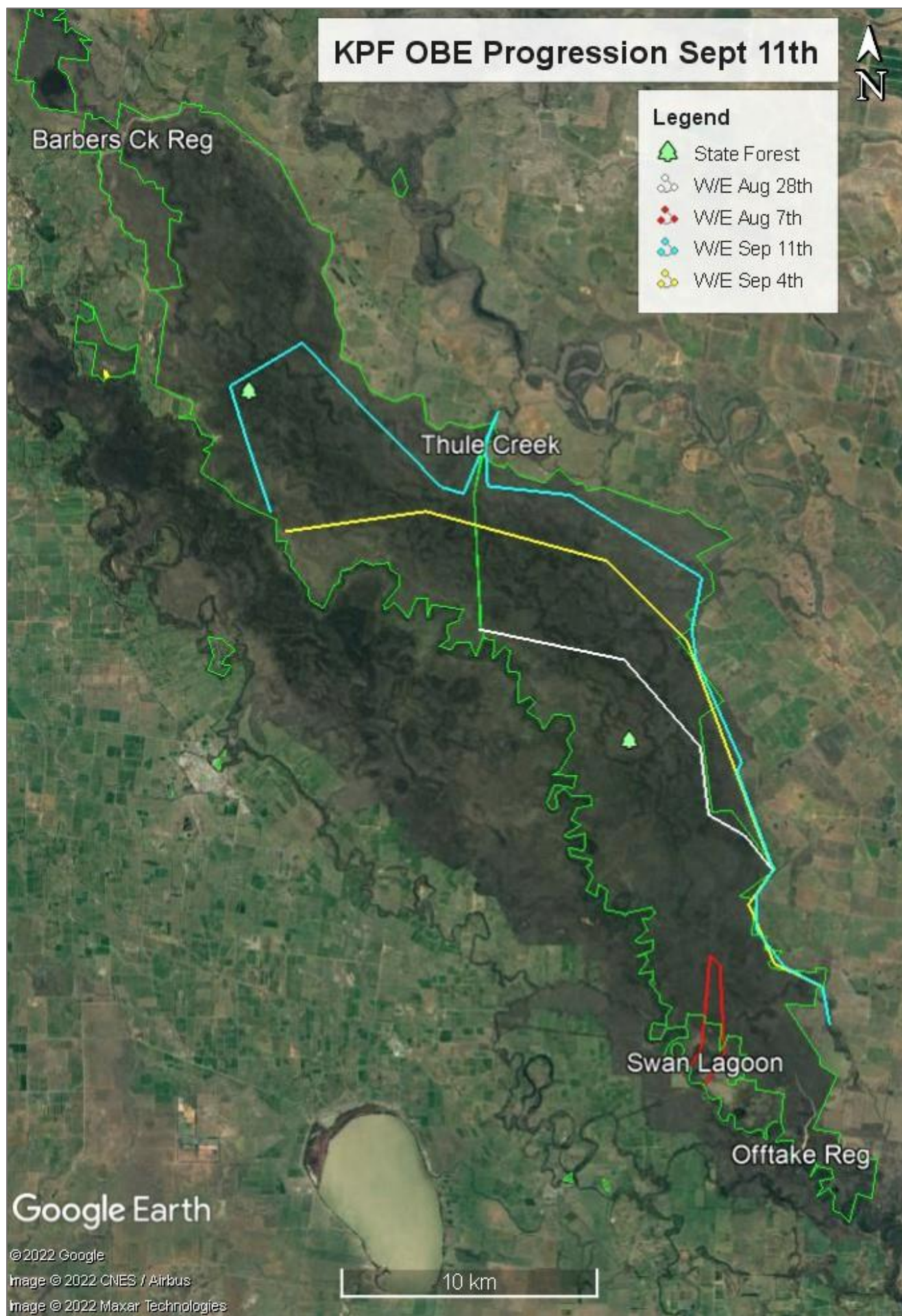


Figure 2: Map indicating the approximate OBE flow progression through KPF

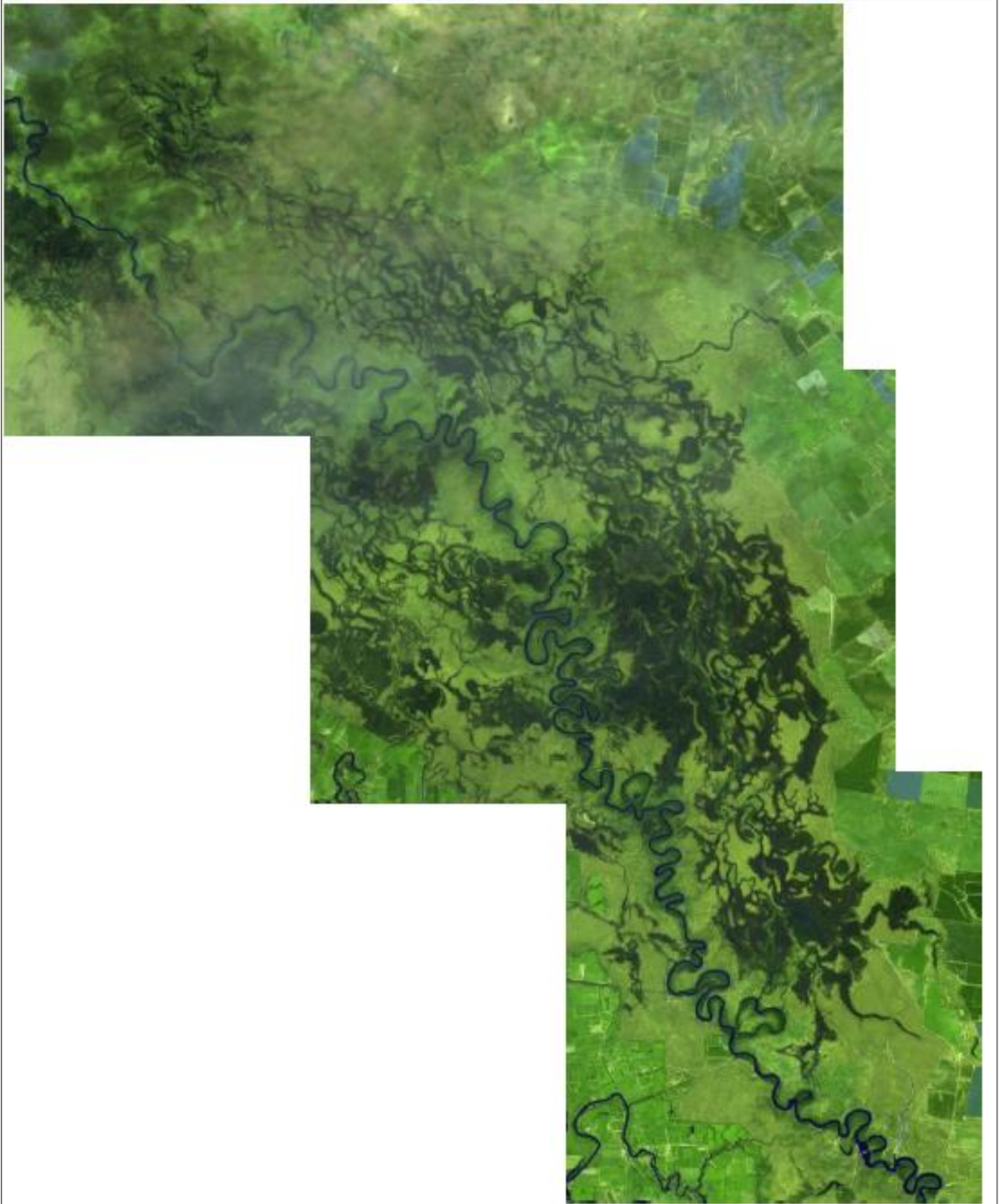


Figure 3: Landsat satellite image indicating the extent of flooding 7th September

Data collated from <https://livedata.mdba.gov.au/system-view> <https://realtime.watersnsw.com.au/> <https://www.sentinel-hub.com/explore/sentinelplayground/> and Forestry observations.



Figure 4: McMahon's Waterhole 7/09/2022



Figure 5: Thule Creek Regulator 7/09/2022